

8 7 6 5 4 3 2 1

# Alpine Engineering

## HP/S200

### Fixed and Moving Schematic Part #: DAE-HPSS200-1209

#### Revision:

- Rev D - Changed value of circuit breakers to match layout change.
- Rev E - Changed CB105A and CB508A from 1A to 2A breakers
- Rev F - Changed corrected wire reference for 108, 108A and 108B and all wire effected by the change.
- Rev G - CAR 012214
- Rev H - ECN DA-1
- Rev I - ECN-140353-0002
- Rev J - ECN-140353-0003, Changed CB150 and CB150A per customers request
- Rev K - Sheet 9 of 13, Line 839, changed the wire from Synqnet I/D #2, terminal 3 to 24-3 instead of 0v-3.  
Remove the Lenth Bypass

Fixed: sheets 2-5, 10, 11  
Moving: sheets 6-9, 12, 13

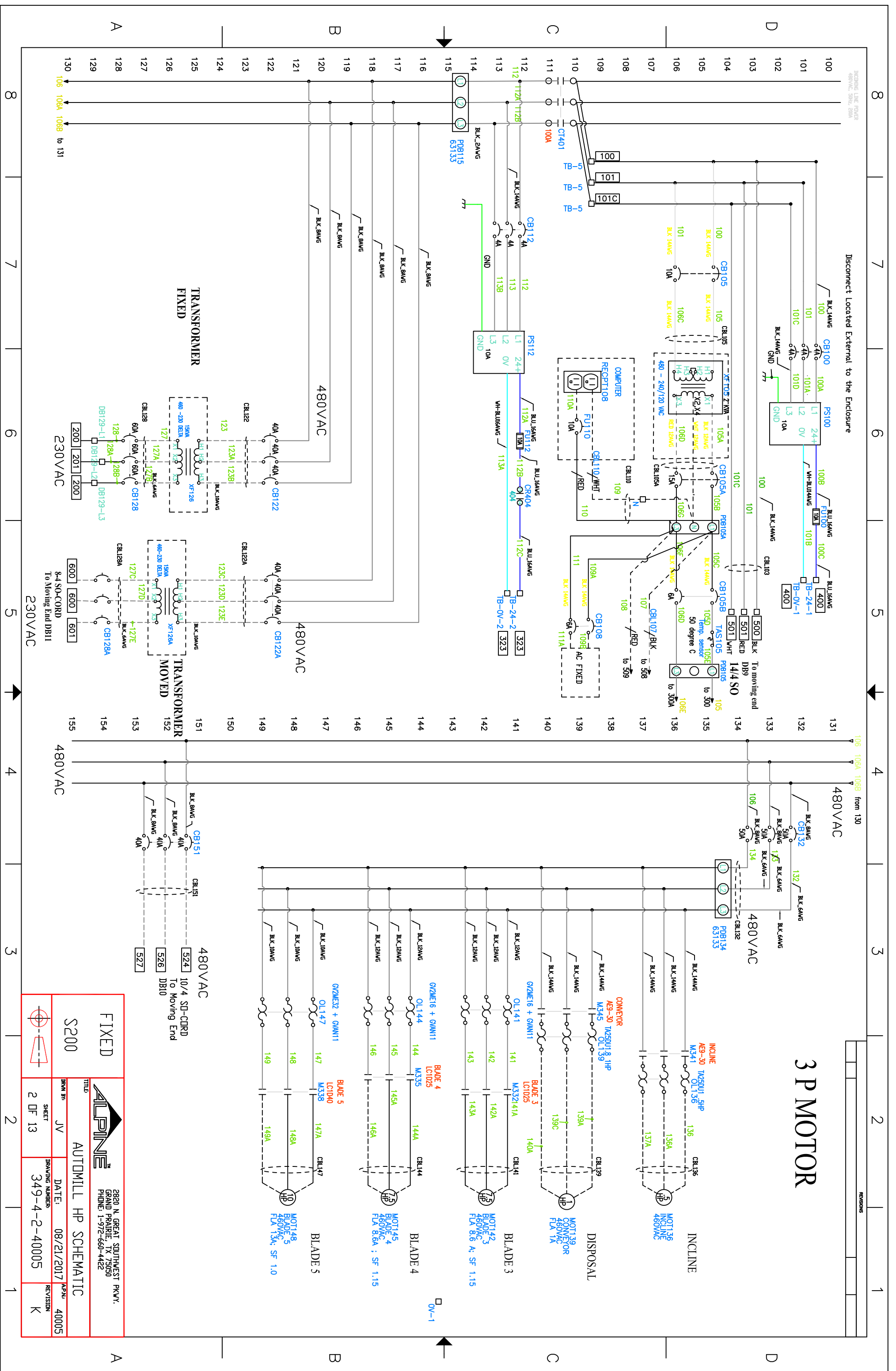
S200		 2820 N. GREAT SOUTHWEST PKWY. GRAND PRAIRIE, TX 75050 PHONE: 1-972-660-4422	
TITLE AUTOMILL HP SCHEMATIC		DRWN BY JV	DATE 08/21/2017
SHEET 1 OF 13		DRAWING NUMBER 349-4-2-40005	APP'D 40005
 		REVISION K	

8 7 6 5 4 3 2 1

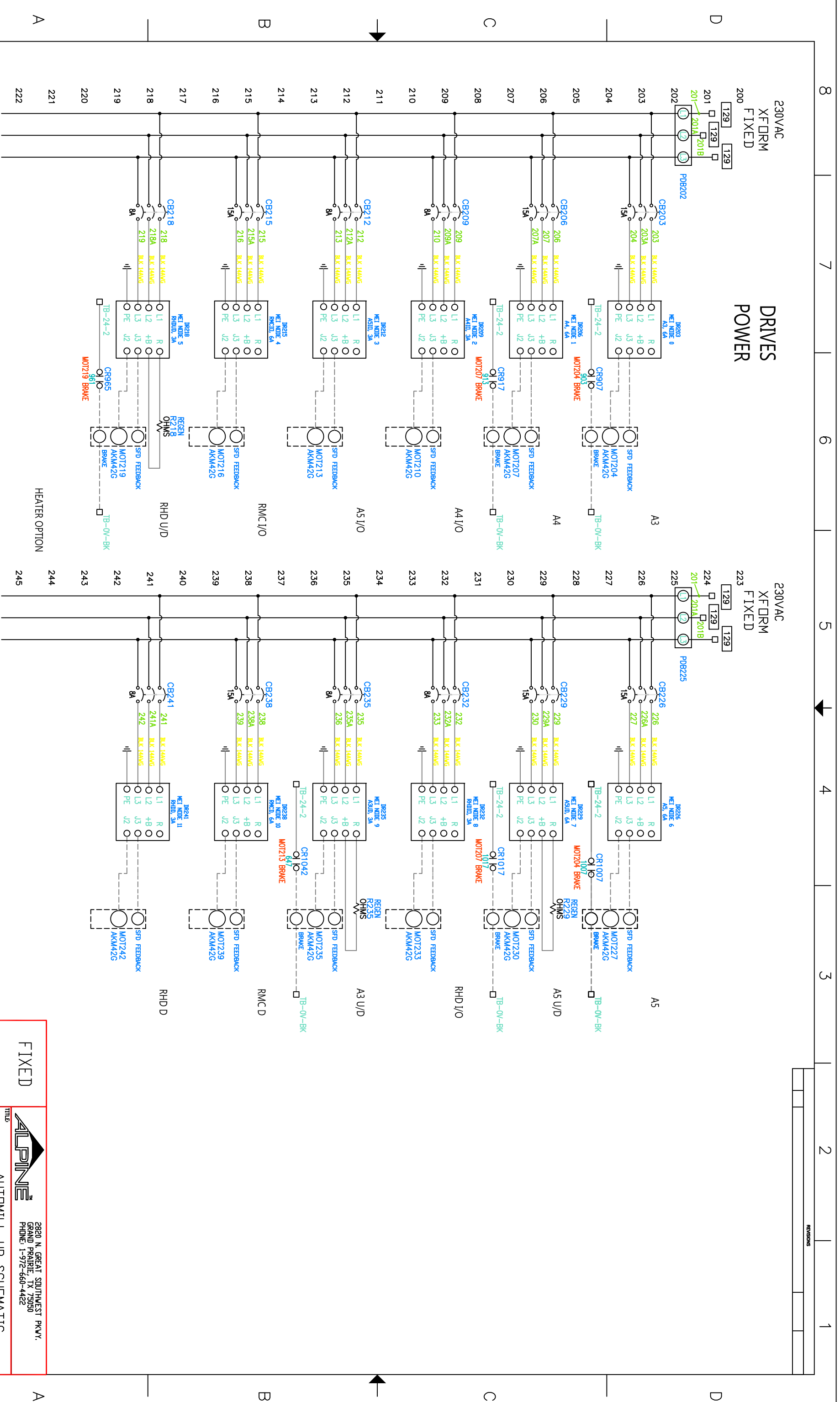
INCOMING LINE POWER  
480VAC, 3PH, 3W, 3Ø

Disconnect Located External to the Enclosure

# 3 P MOTOR



<p><b>FIXED</b></p> <p>S200</p>		<p><b>ALPINE</b></p> <p>2820 N. GREAT SOUTHWEST PKWY. GRAND PRAIRIE, TX 75050 PHONE: 1-972-660-4422</p>	
<p>TITLE</p> <p><b>AUTOMILL HP SCHEMATIC</b></p>		<p>DATE: 08/21/2017</p>	
<p>DRWN BY: JV</p>		<p>APP'D: 40005</p>	
<p>SHEET: 2 OF 13</p>		<p>DRAWING NUMBER: 349-4-2-40005</p>	
<p>REVISION: K</p>		<p>REVISION: K</p>	

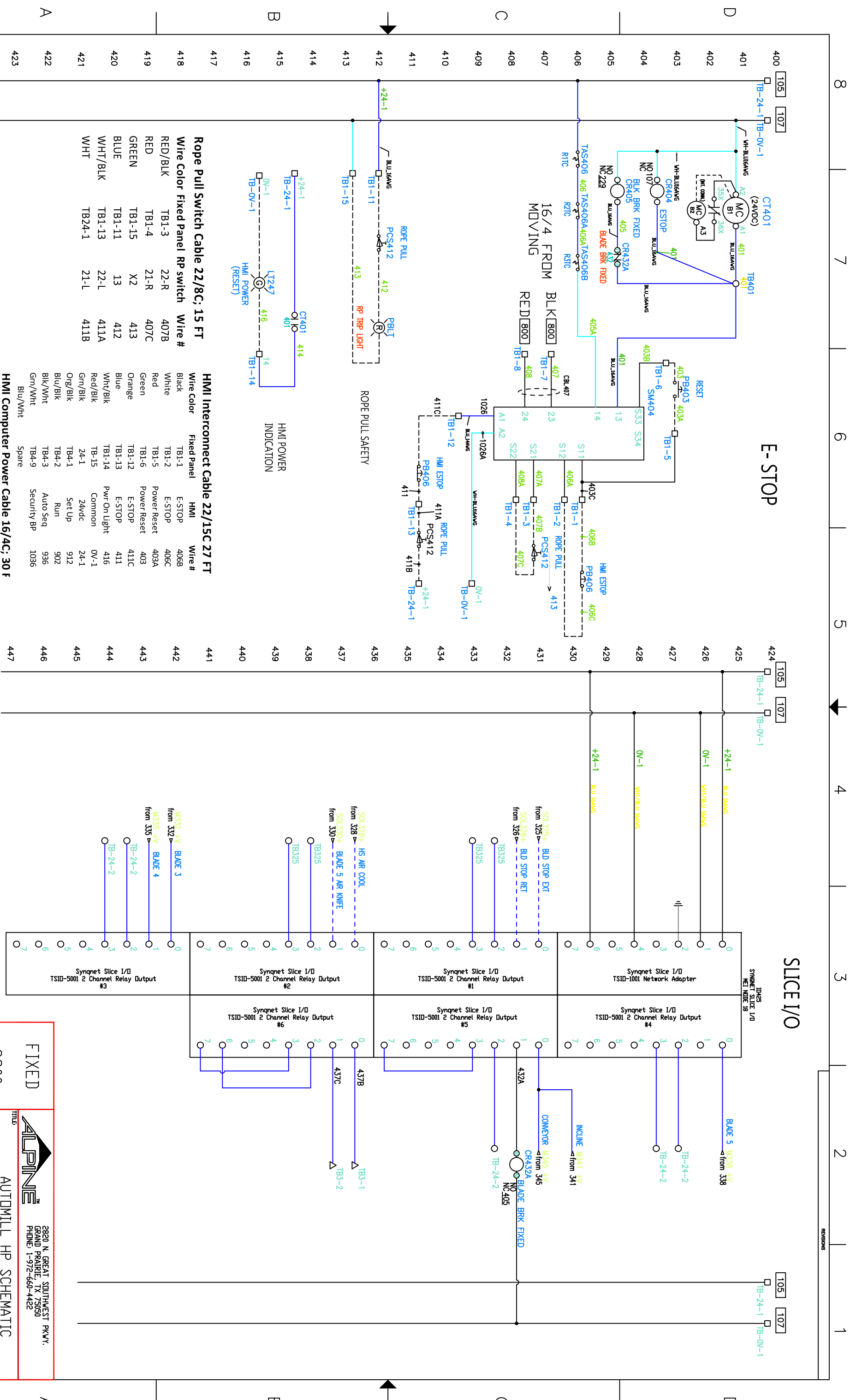


**DRIVES  
POWER**

HEATER OPTION

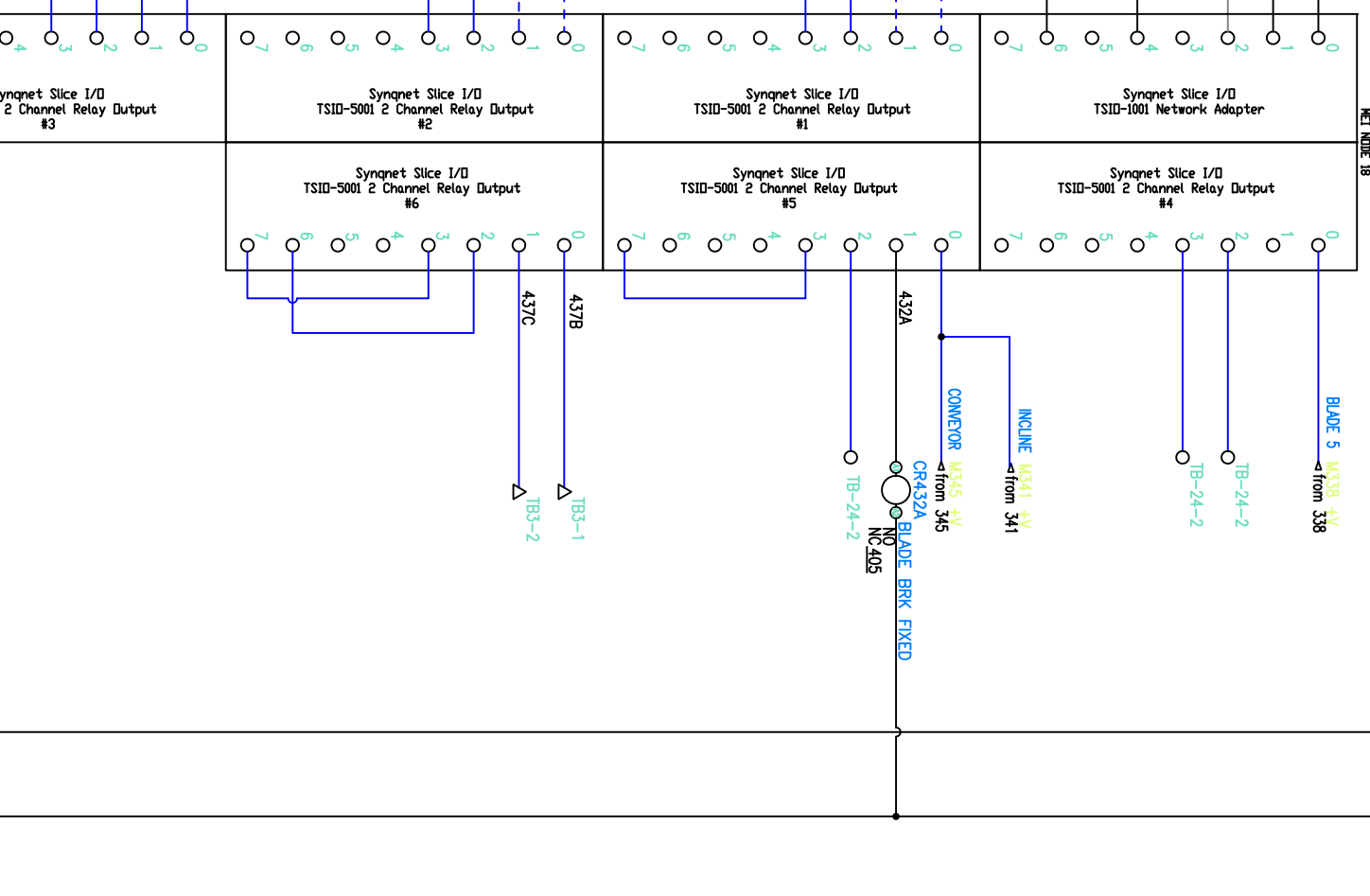
<p><b>FIXED</b></p> <p>S200</p>		<p><b>ALPINE</b></p> <p>2820 N. GREAT SOUTHWEST PKWY, GRAND PRAIRIE, TX 75050 PHONE: 1-972-660-4422</p>	
<p>TITLE: AUTOMILL HP SCHEMATIC</p>		<p>DATE: 08/21/2017</p>	<p>APPRO: 40005</p>
<p>DRWN BY: JV</p>	<p>SHEET: 3 OF 13</p>	<p>DRAWING NUMBER: 349-4-2-40005</p>	<p>REVISION: K</p>





**E-STOP**

**SLICE I/O**



**Rope Pull Switch Cable 22/8C; 15 FT**

Wire Color	Fixed Panel RP switch	Wire #
RED/BLK	TB1-3	22-R
RED	TB1-4	21-R
GREEN	TB1-15	X2
BLUE	TB1-11	13
WHT/BLK	TB1-13	22-L
WHT	TB24-1	21-L

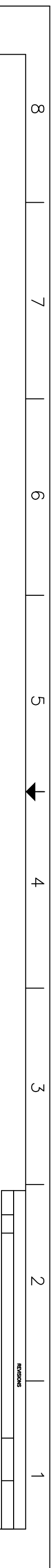
  

**HMI Interconnect Cable 22/15C 27 FT**

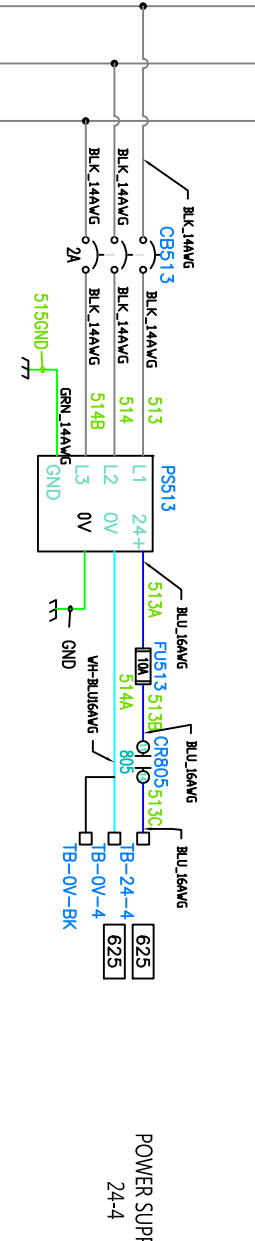
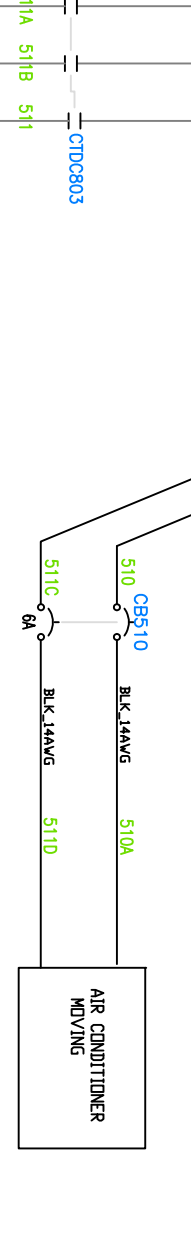
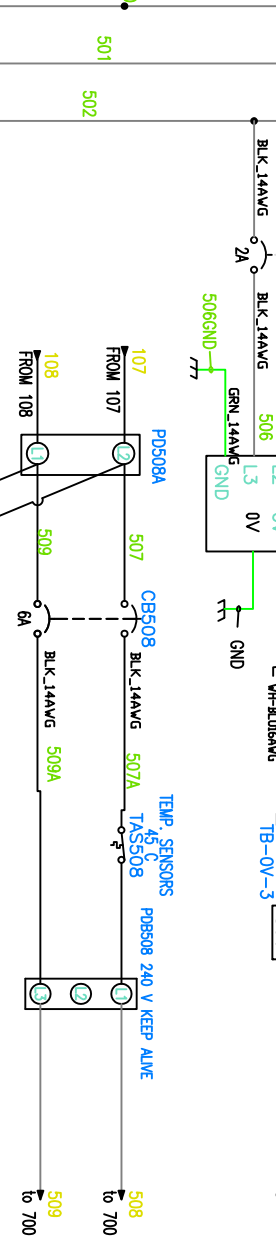
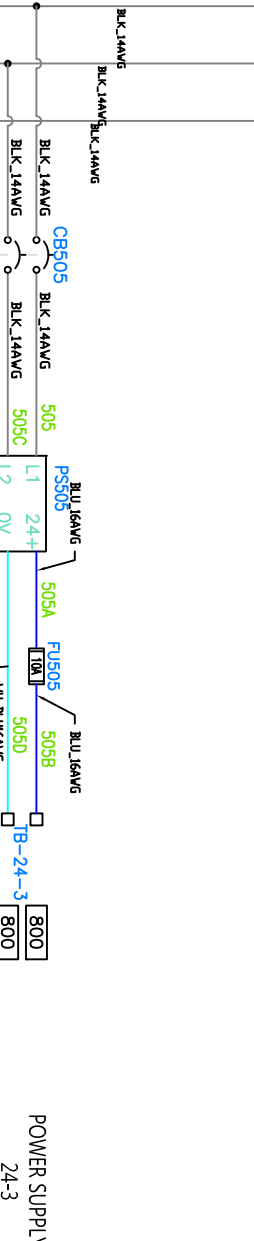
Wire Color	Fixed Panel	HMI	Wire #
Black	TB1-1	E-STOP	406B
White	TB1-2	E-STOP	406C
Red	TB1-5	Power Reset	403A
Green	TB1-6	Power Reset	403
Orange	TB1-12	E-STOP	411C
Blue	TB1-13	E-STOP	411
Wht/Blk	TB1-14	Pwr On Light	416
Red/Blk	TB-15	Common	0V-1
Gm/Blk	24-1	24Vdc	24-1
Org/Blk	TB4-1	Set Up	912
Blu/Blk	TB4-2	Run	902
Blk/Wht	TB4-3	Auto Seq	936
Gm/Wht	TB4-9	Security BP	1036
Blu/Wht	Spare		

**HMI Computer Power Cable 16/4C; 30 F**

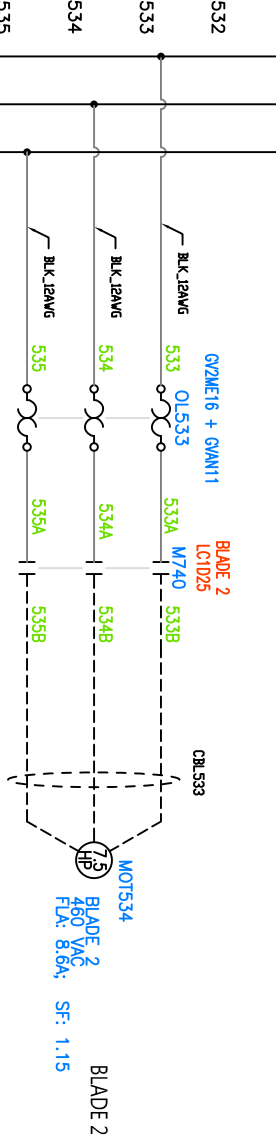
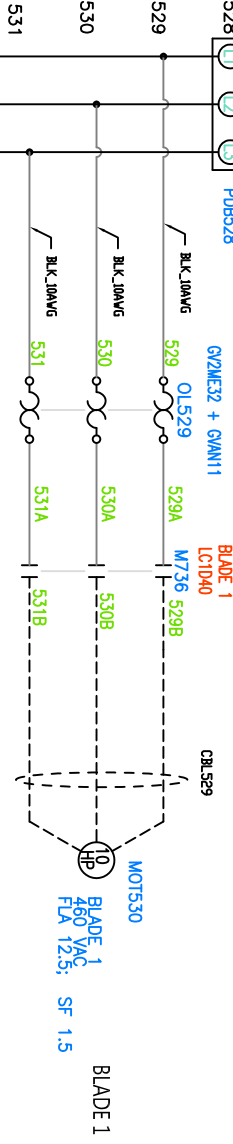
<p><b>ALPINE</b> AUTOMILL HP SCHEMATIC</p>	<p>2820 N. GREAT SOUTHWEST PKWY. GRAND PRAIRIE, TX 75050 PHONE: 1-972-660-4422</p>	
	<p>DATE: 08/21/2017</p>	<p>APPRO: 40005</p>
<p>TITLE: S200</p>	<p>DRWN BY: JV</p>	<p>SHEET: 5 OF 13</p>
<p>REV: 1</p>	<p>DATE: 08/21/2017</p>	<p>REVISION: K</p>



480VAC, 3phase, 10A  
Disconnect Located External to the Enclosure



480VAC, 3phase, 32A  
Disconnect Located External to the Enclosure



MOVING		TITLE	
S200		AUTOMILL HP SCHEMATIC	
IRVIN BY: JV	DATE: 08/21/2017	APPRO: 40005	REVISION: K
SHEET: 8 OF 13	DRAWING NUMBER: 349-4-2-40005		

2820 N. GREAT SOUTHWEST PKWY.  
GRAND PRAIRIE, TX 75050  
PHONE: 1-972-660-4422

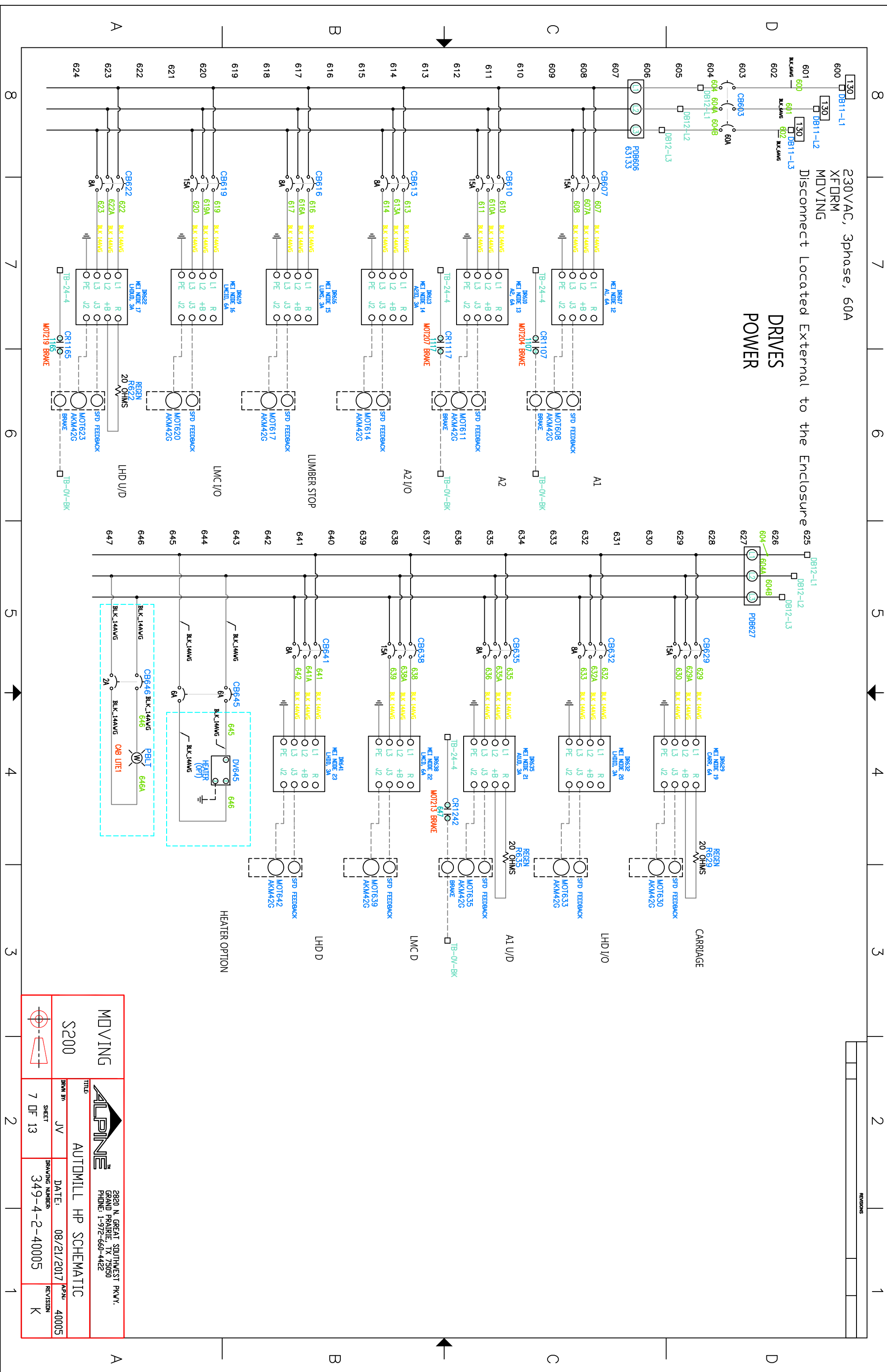


230VAC, 3phase, 60A

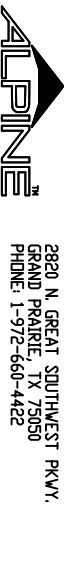
XFORM  
MOVING

Disconnect Located External to the Enclosure

# DRIVES POWER



MOVING  
S200



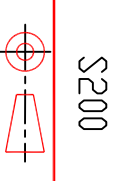
2820 N. GREAT SOUTHWEST PKWY.,  
GRAND PRAIRIE, TX 75050  
PHONE: 1-972-660-4422

TITLE: AUTOMILL HP SCHEMATIC

DATE: 08/21/2017

DRAWING NUMBER: 349-4-2-40005

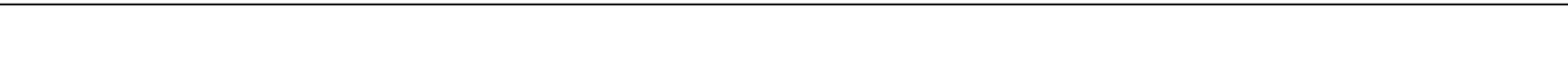
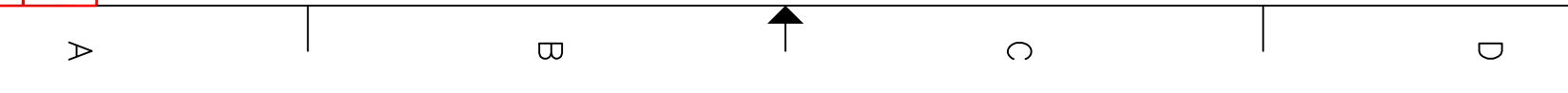
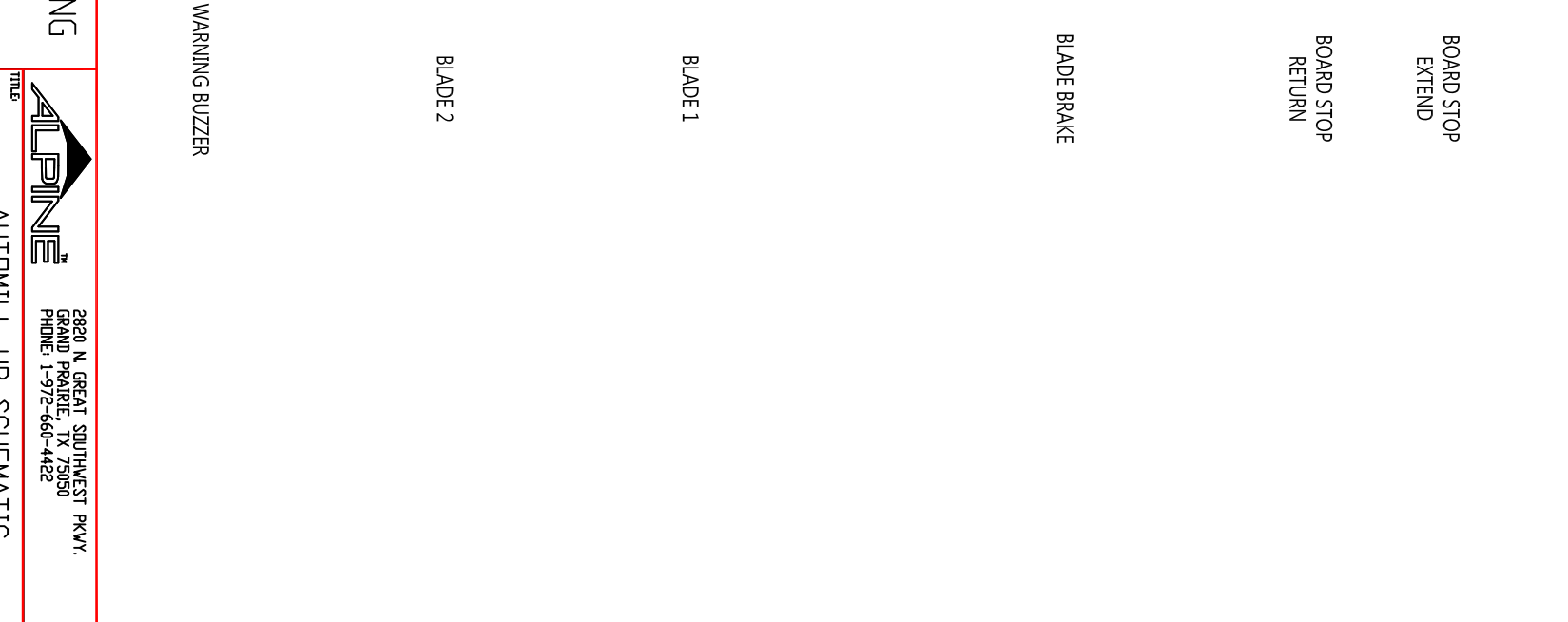
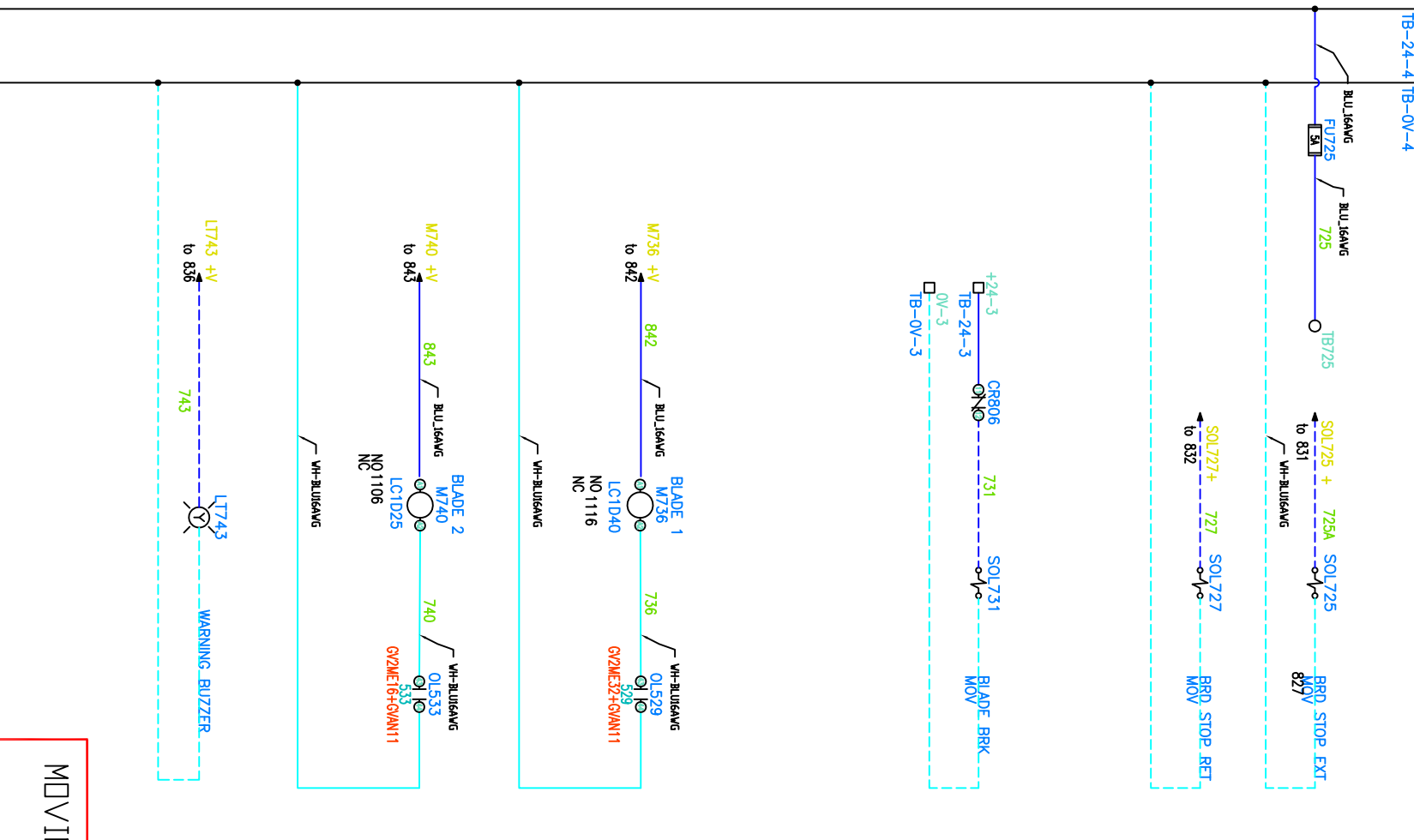
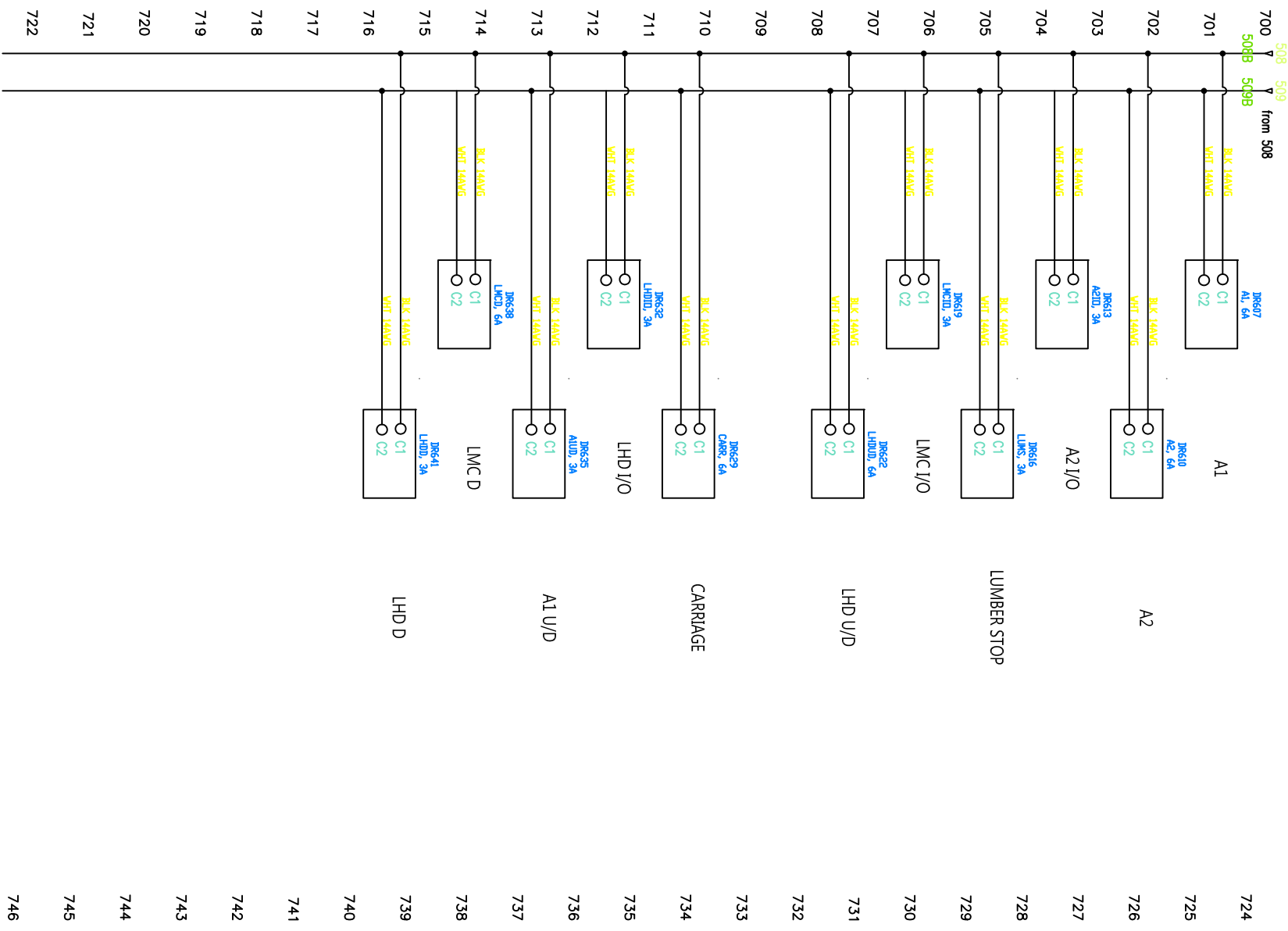
REVISION: 40005  
K



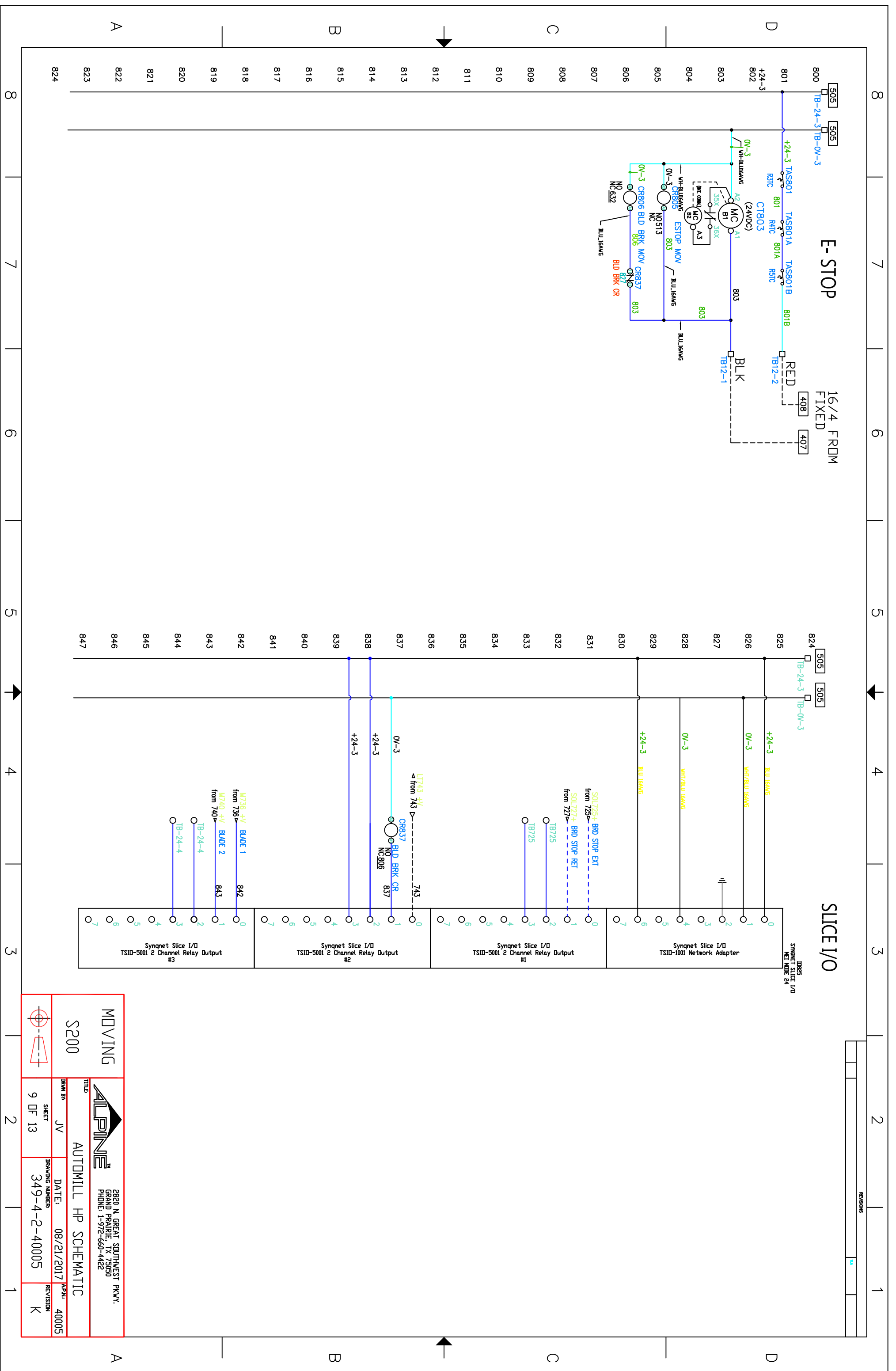
SHEET 7 OF 13

# DRIVES CONTROL POWER

# 24VDC-4 CONTROLS

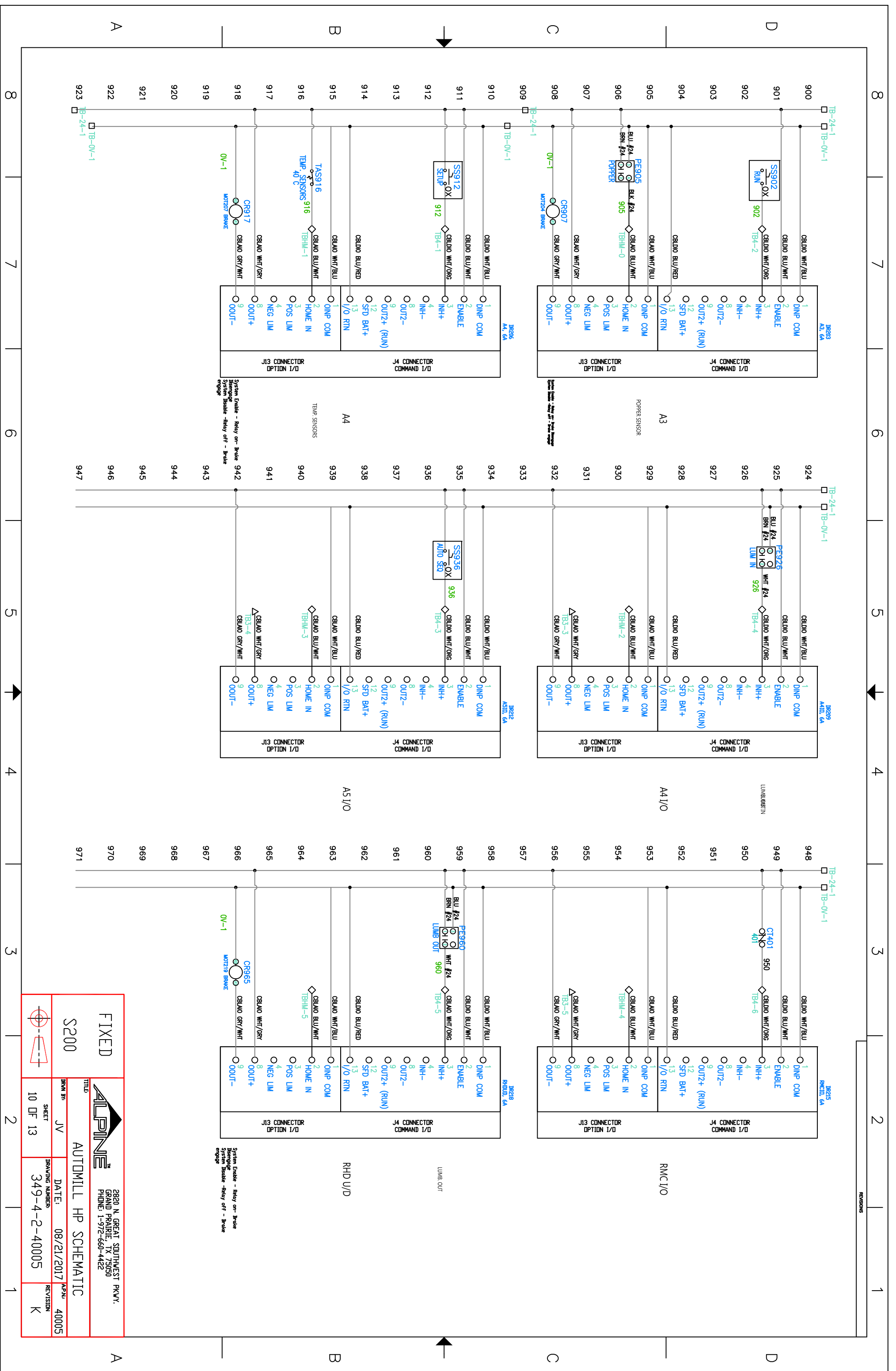




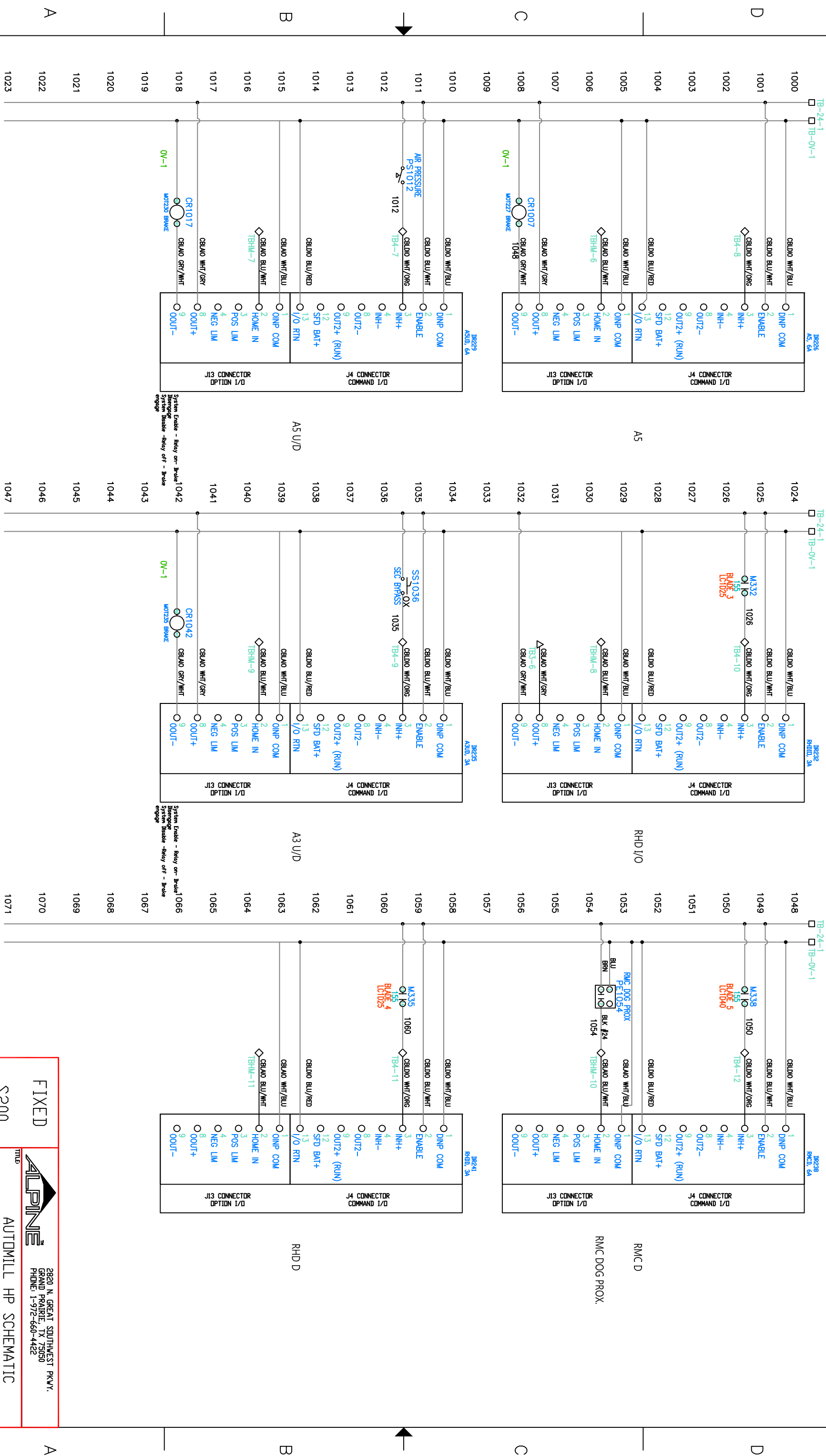


MOVING			
S200		2820 N. GREAT SOUTHWEST PKWY. GRAND PRAIRIE, TX 75050 PHONE: 1-972-660-4422	
IRVIN BY:	JV	DATE:	08/21/2017
SHEET:	9 OF 13	DRAWING NUMBER:	349-4-2-40005
REVISION:		APP'D:	40005
		REVISION:	K

TITLE: AUTOMILL HP SCHEMATIC



FIXED		S200	
<b>AUTOMILL HP SCHEMATIC</b>			
2820 N. GREAT SOUTHWEST PKWY. GRAND PRAIRIE, TX 75050 PHONE: 1-972-660-4422		TITLE: JV DATE: 08/21/2017 DRAWING NUMBER: 349-4-2-40005 APPL: 40005 REVISION: K	



**FIXED**

**S200**

**ALPINE**

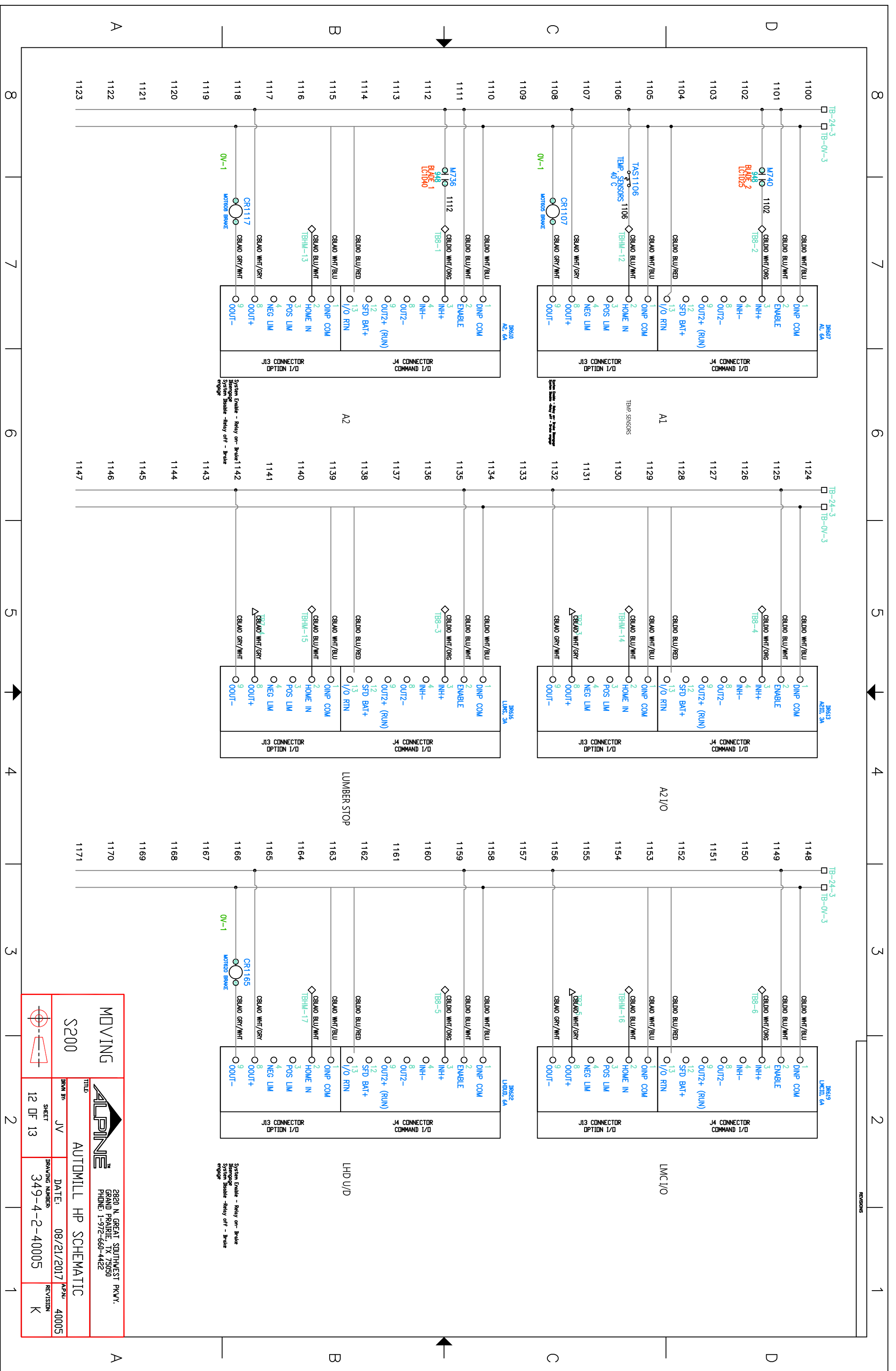
**AUTOMILL HP SCHEMATIC**

2820 N. GREAT SOUTHWEST PKWY.  
GRAND PRAIRIE, TX 75050  
PHONE: 1-972-660-4422

DATE: 08/21/2017  
DRAWING NUMBER: 349-4-2-40005

REVISED: 40005  
REVISION: K

11 OF 13

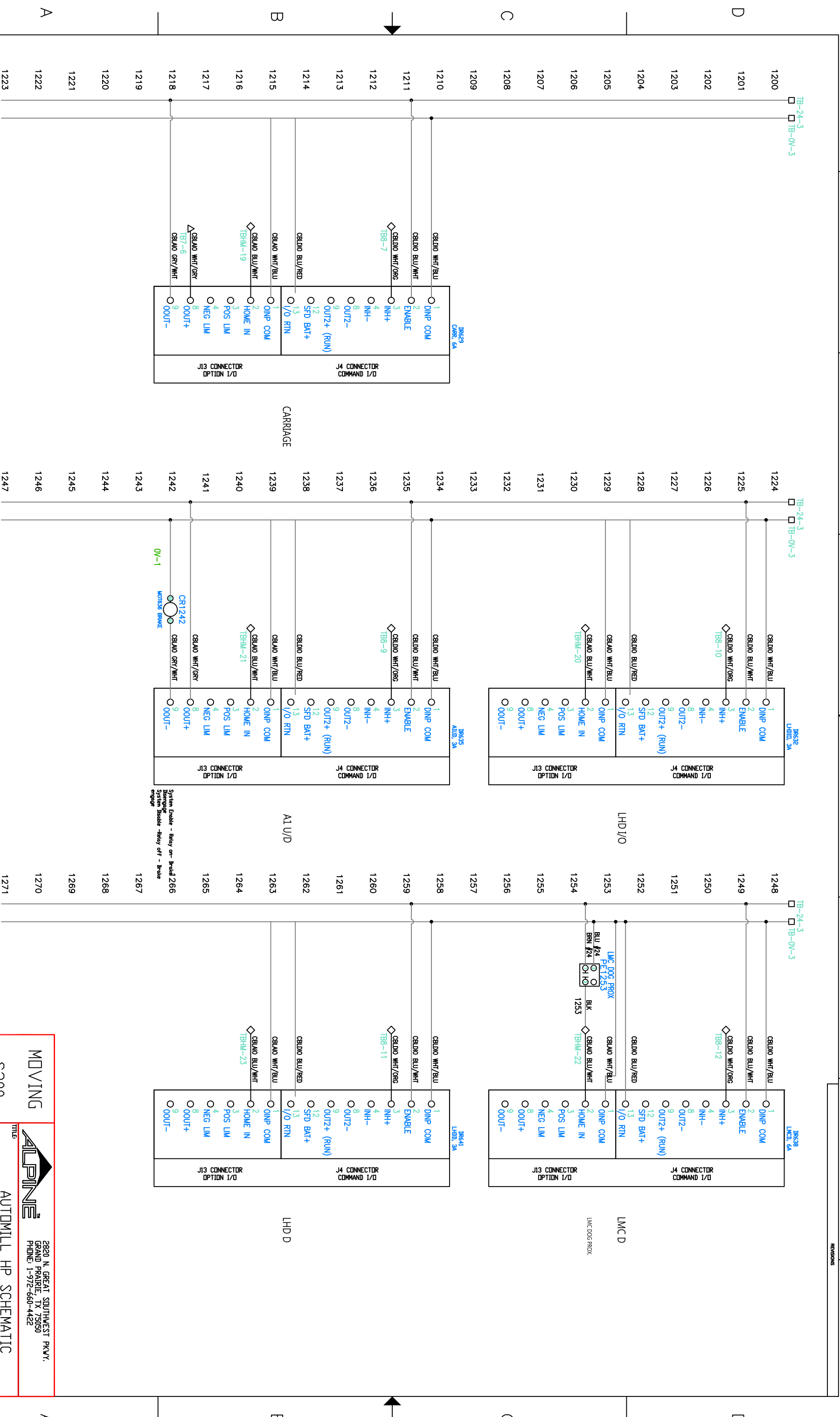


MOVING			
S200		AUTOMILL HP SCHEMATIC	
DATE:	08/21/2017	APPROVED:	40005
DRAWING NUMBER:	349-4-2-40005	REVISION:	K
2820 N. GREAT SOUTHWEST PKWY. GRAND PRAIRIE, TX 75050 PHONE: 1-972-660-4422			

TITLE: AUTOMILL HP SCHEMATIC  
 SHEET: 12 OF 13  
 DATE: 08/21/2017  
 DRAWING NUMBER: 349-4-2-40005  
 REVISION: K

REVISIONS

8 7 6 5 4 3 2 1



**MOVING**

**ALPINE**

2820 N. GREAT SOUTHWEST PKWY.  
GRAND PRAIRIE, TX 75050  
PHONE: 1-972-660-4422

TITLE: **AUTOMILL HP SCHEMATIC**

DATE: 08/21/2017

DRAWING NUMBER: 349-4-2-40005

REVISION: K

SHEET: 13 OF 13

APPROVAL: 40005

DATE: 08/21/2017

REVISION: K