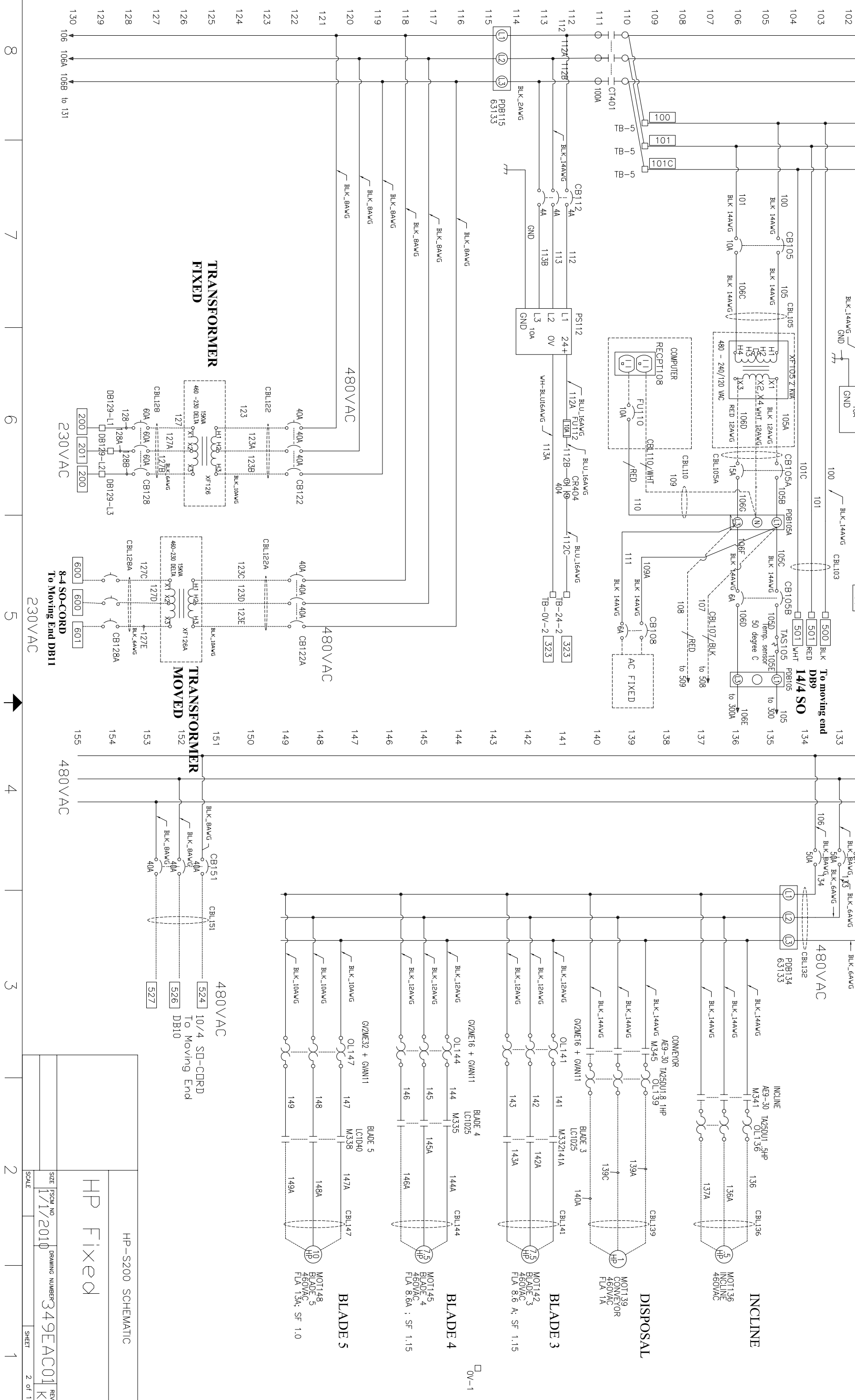


INCOMING LINE POWER  
480VAC, 3PH, 3W, 60Hz

Disconnect Located External to the Enclosure

# 3 P MOTOR

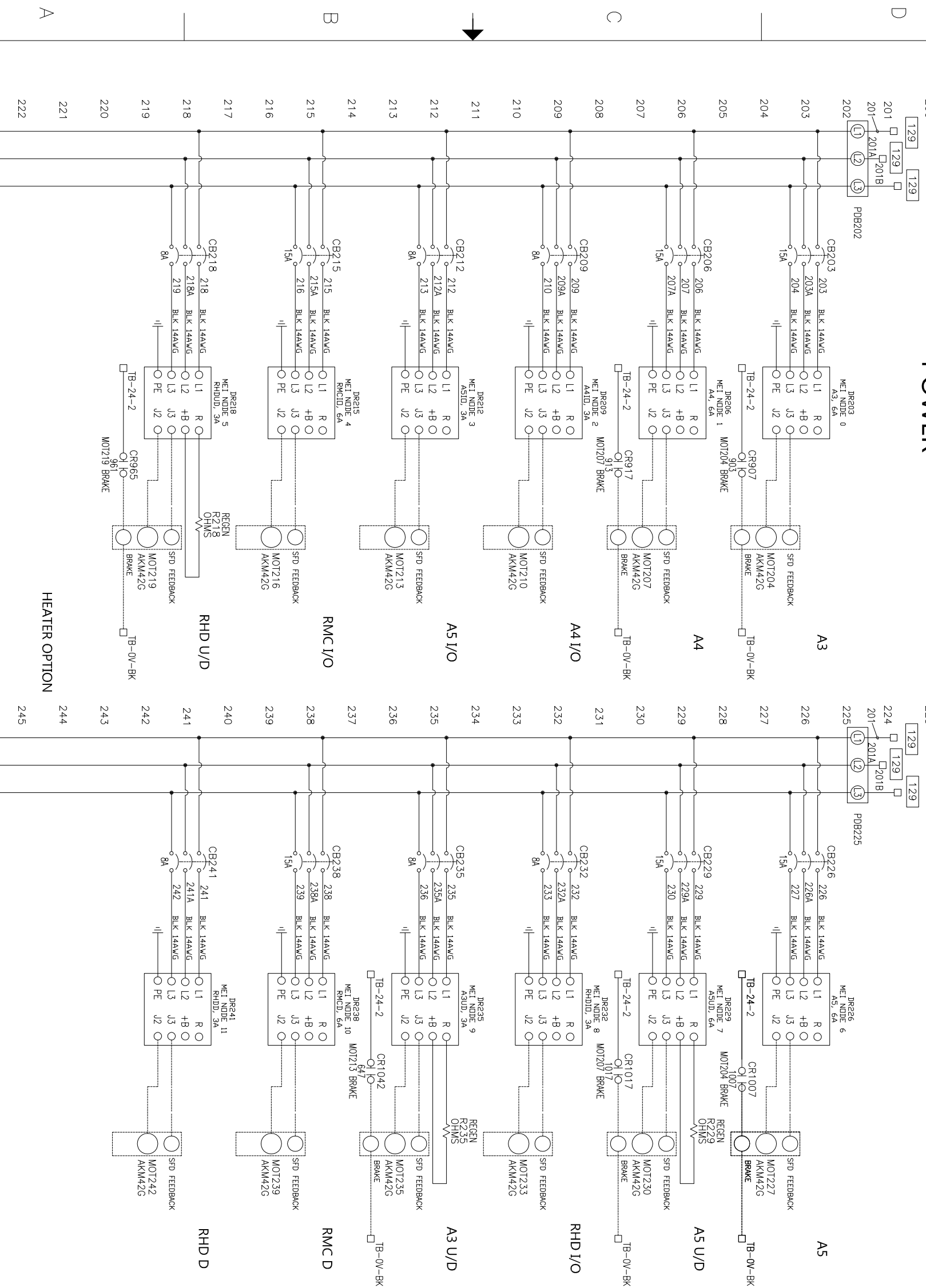


HP-S200 SCHEMATIC	HP Fixed
SIZE: FSCM NO. 171/2010	DRAWING NUMBER: 349EAC01
SCALE:	SHEET: 2 of 13

230VAC  
XFORM  
FIXED

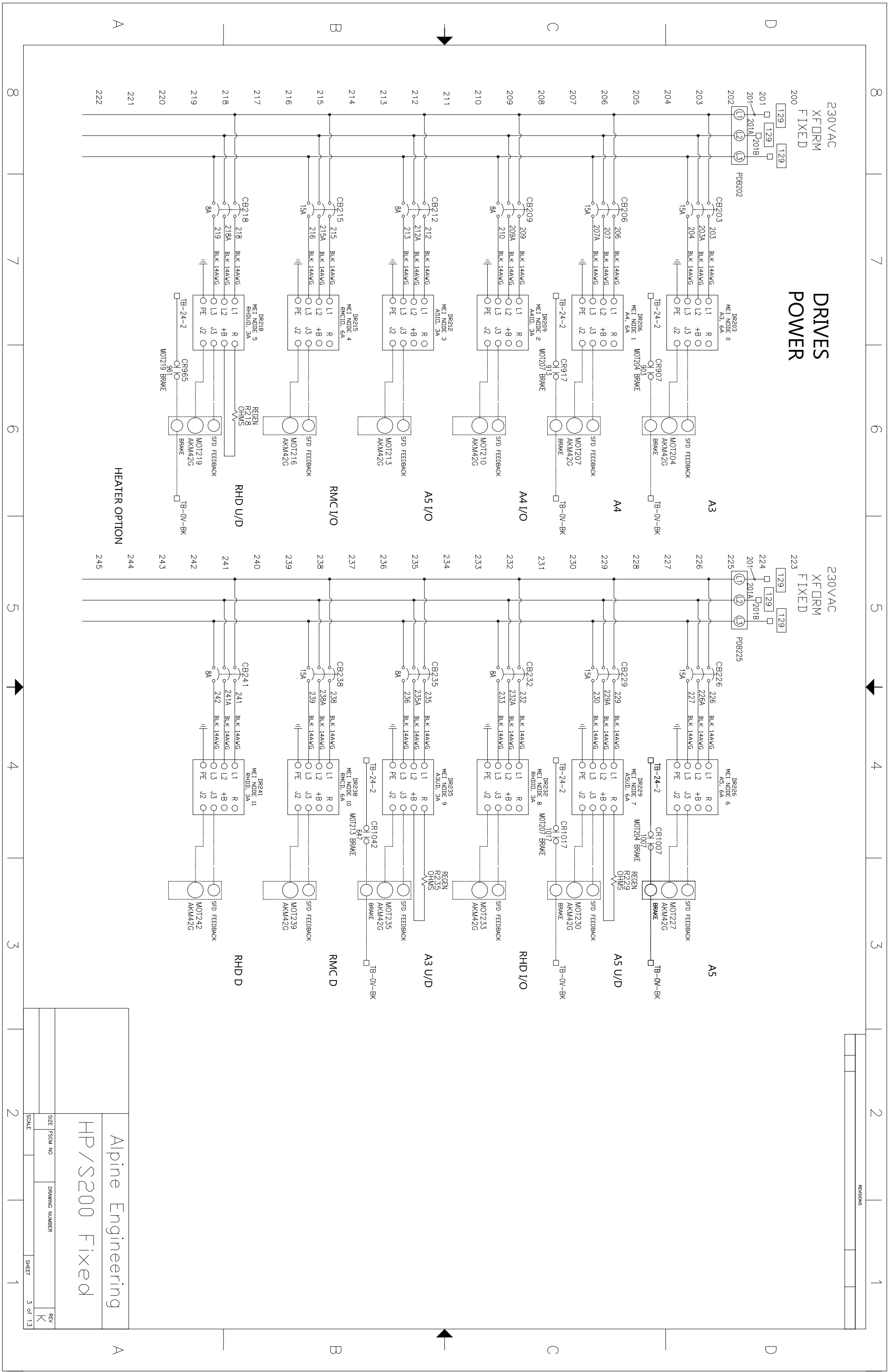
# DRIVES POWER

230VAC  
XFORM  
FIXED



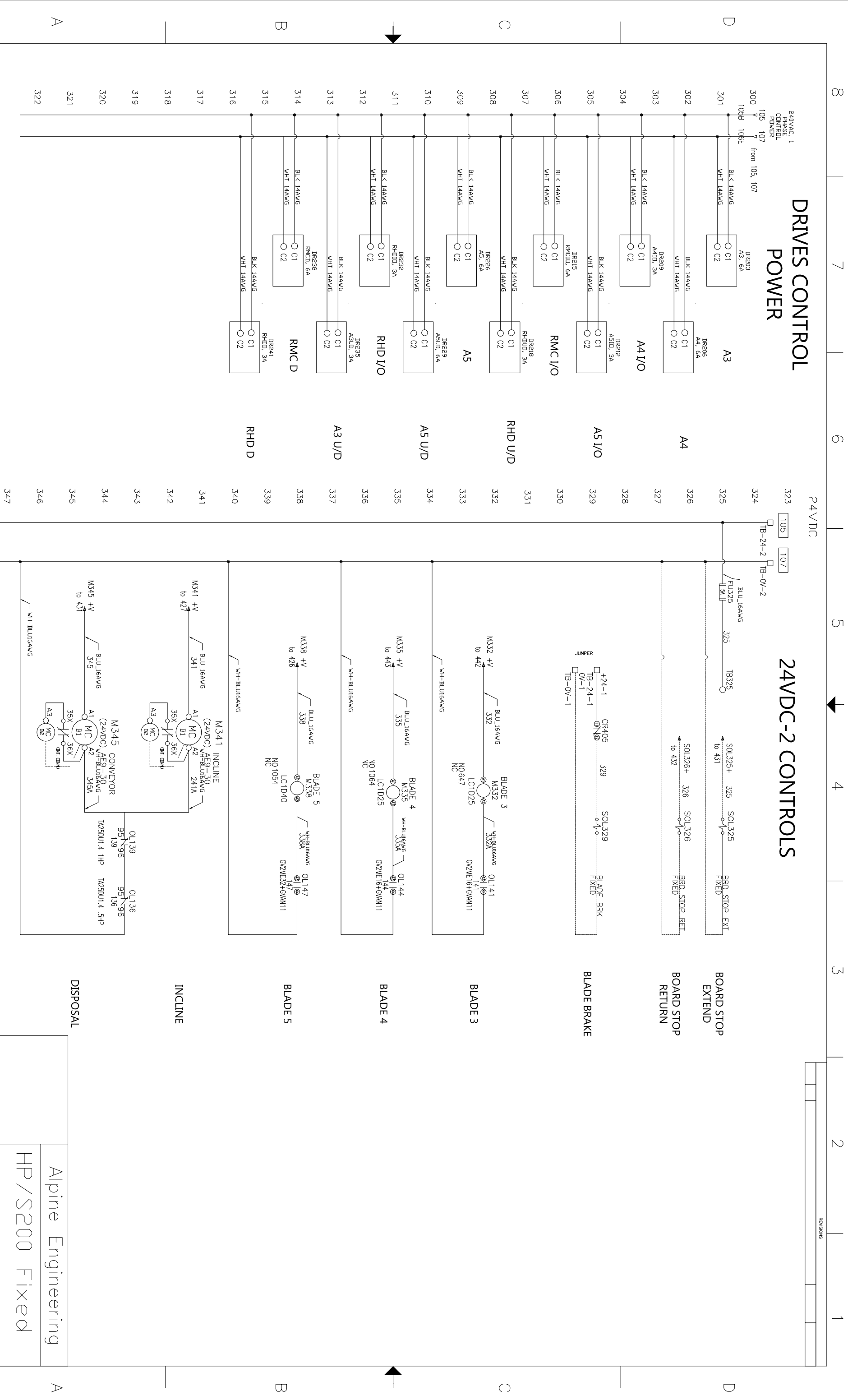
HEATER OPTION

Alpine Engineering	
HP/S200 Fixed	
SIZE FSCM NO	DRAWING NUMBER
SCALE	SHEET 3 of 13



# DRIVES CONTROL POWER

# 24VDC-2 CONTROLS

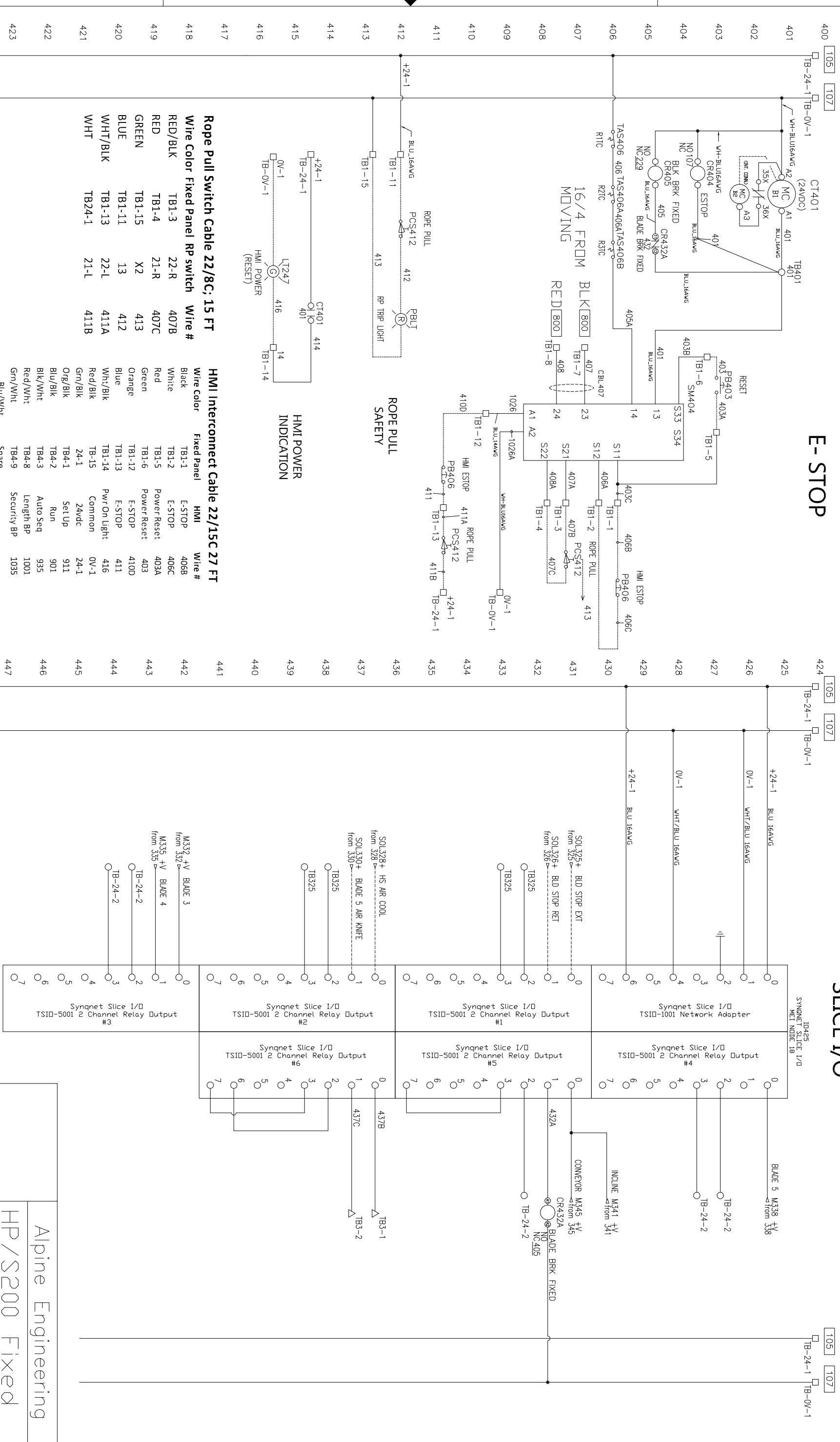


Alpine Engineering

HP/S200 Fixed

SIZE	FSM NO	DRAWING NUMBER	REV
SCALE			K
SHEET			4 of 13

**SLICE I/O**



**E- STOP**

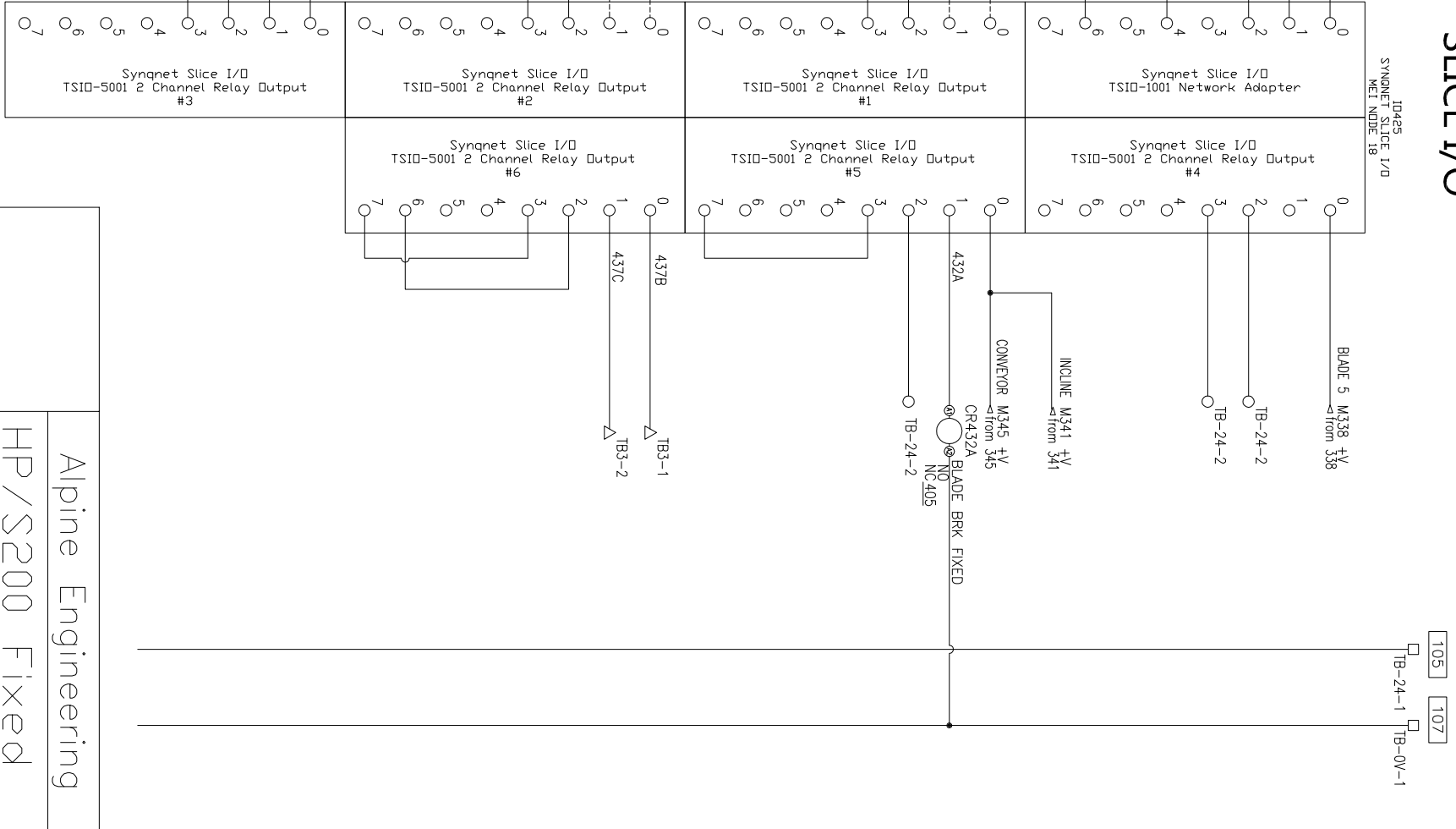
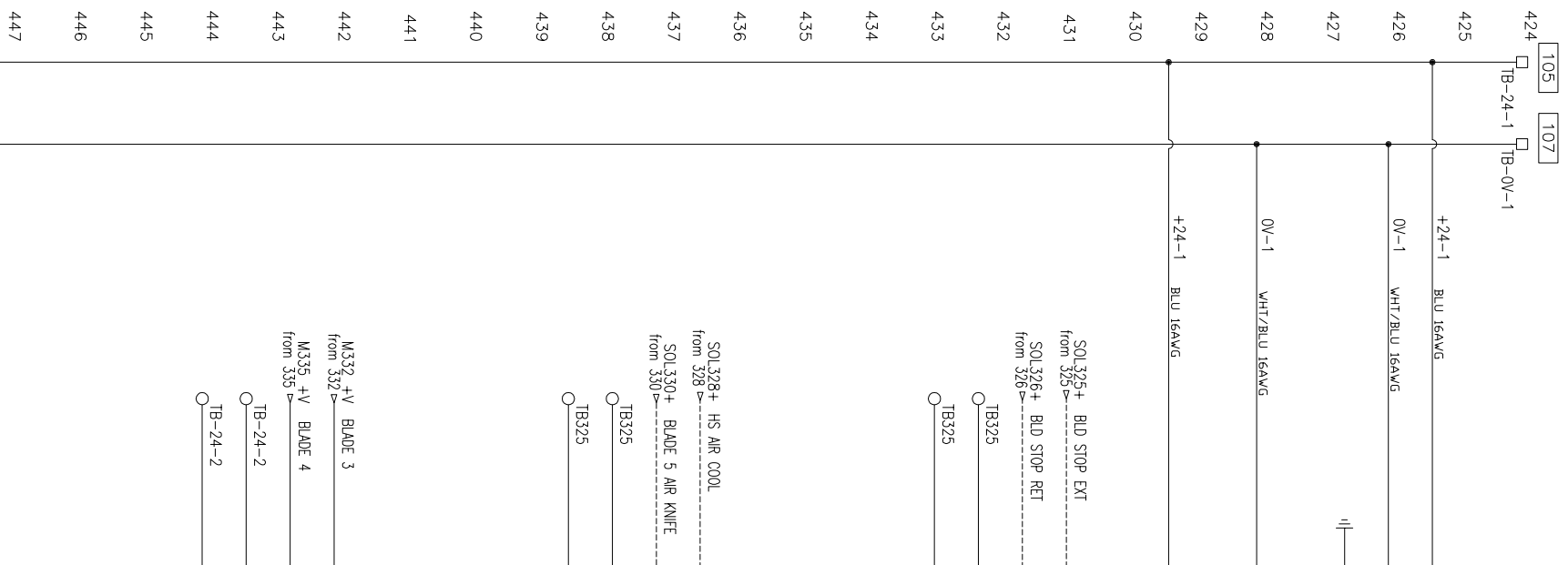
**Rope Pull Switch Cable 22/8C; 15 FT**

Wire Color	Fixed Panel	RP switch	Wire #
RED/BLK	TB1-3	22-R	407B
RED	TB1-4	21-R	407C
GREEN	TB1-15	X2	413
BLUE	TB1-11	13	412
WHT/BLK	TB1-13	22-L	411A
WHT	TB24-1	21-L	411B

**HMI Interconnect Cable 22/15C 27 FT**

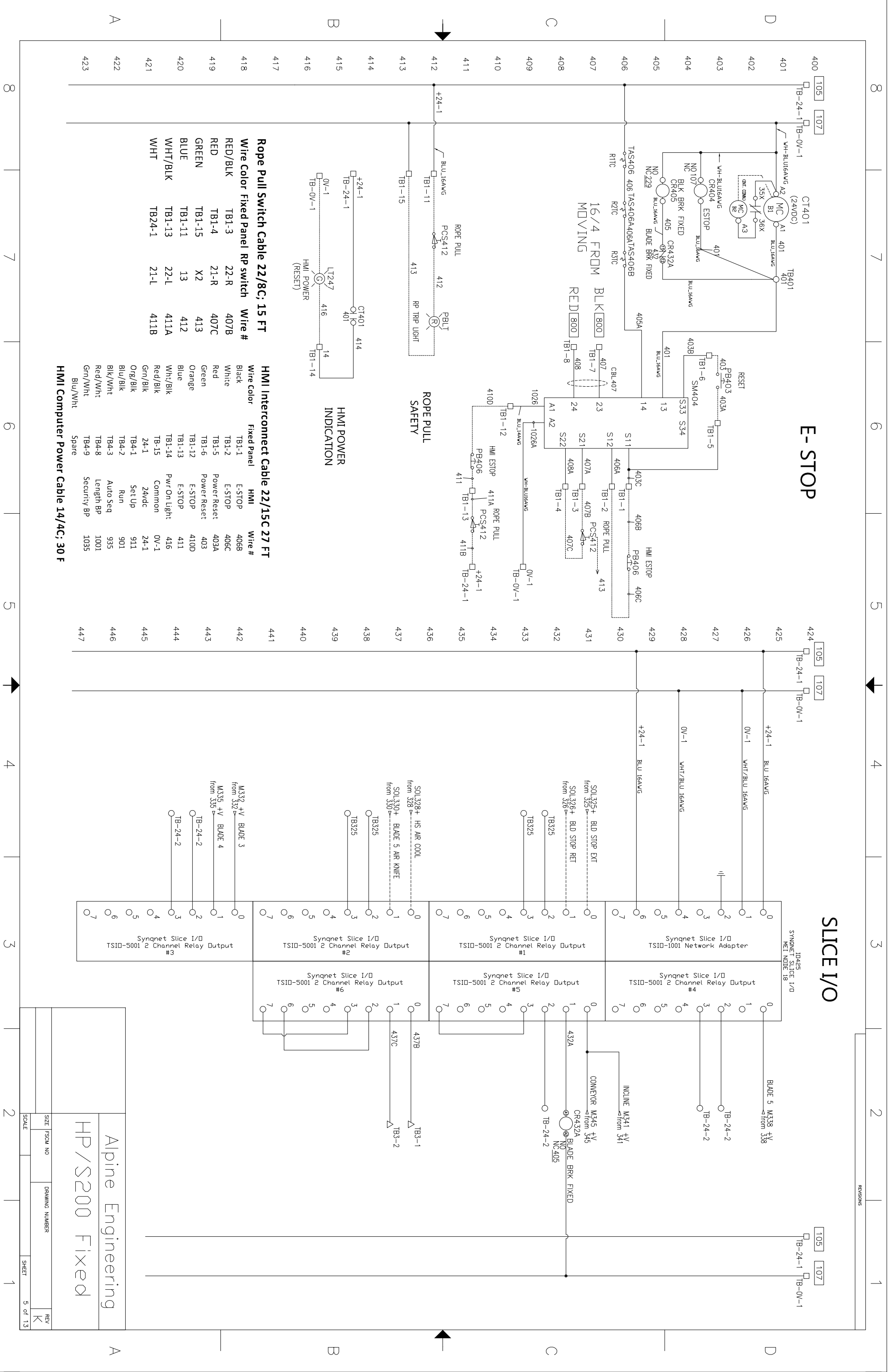
Wire Color	Fixed Panel	HMI	Wire #
Black	TB1-1	E-STOP	406B
White	TB1-2	E-STOP	406C
Red	TB1-5	Power Reset	403A
Green	TB1-6	Power Reset	403
Orange	TB1-12	E-STOP	410D
Blue	TB1-13	E-STOP	411
Wht/Blk	TB1-14	Pwr On Light	416
Red/Blk	TB-15	Common	0V-1
Grr/Blk	24-1	24Vdc	24-1
Org/Blk	TB4-1	Set Up	911
Blu/Blk	TB4-2	Run	901
Blk/Wht	TB4-3	Auto Seq	935
Red/Wht	TB4-8	Length BP	1001
Grr/Wht	TB4-9	Security BP	1035
Blu/Wht	Spare		

**HMI Computer Power Cable 14/4C; 30 F**



Alpine Engineering  
 HP/S200 Fixed

SIZE	FSCM NO	DRAWING NUMBER	REV
SCALE			K
SHEET			5 of 13



480VAC, 3phase, 10A  
Disconnect Located External to the Enclosure

480VAC, 3phase, 32A  
Disconnect Located External to the Enclosure

POWER SUPPLY  
24-3

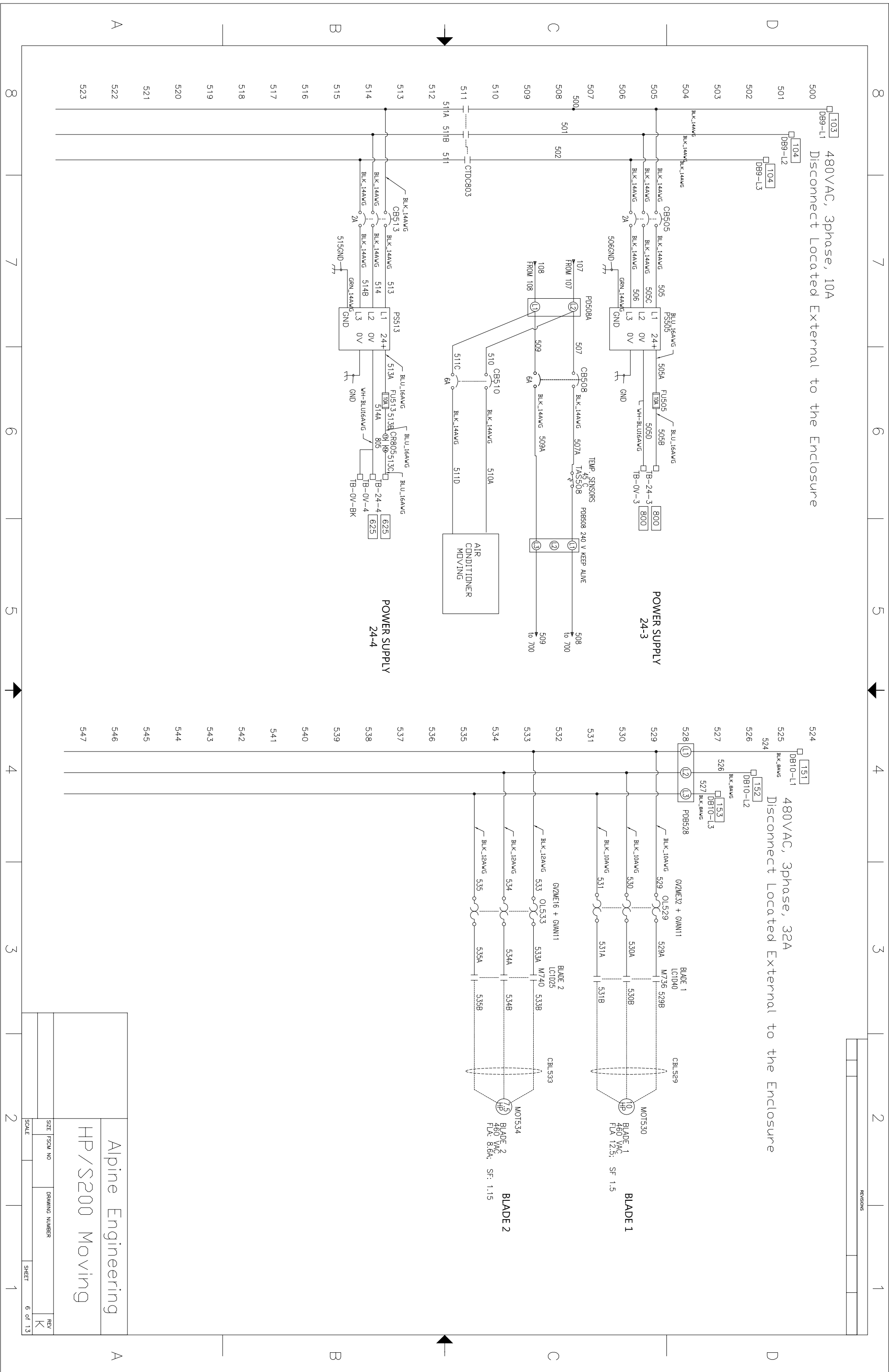
POWER SUPPLY  
24-4

AIR  
CONDITIONER  
MOVING

BLADE 1

BLADE 2

Alpine Engineering	
HP/S200 Moving	
SIZE	FSOM NO
SCALE	DRAWING NUMBER
SHEET	6 of 13
REV	K

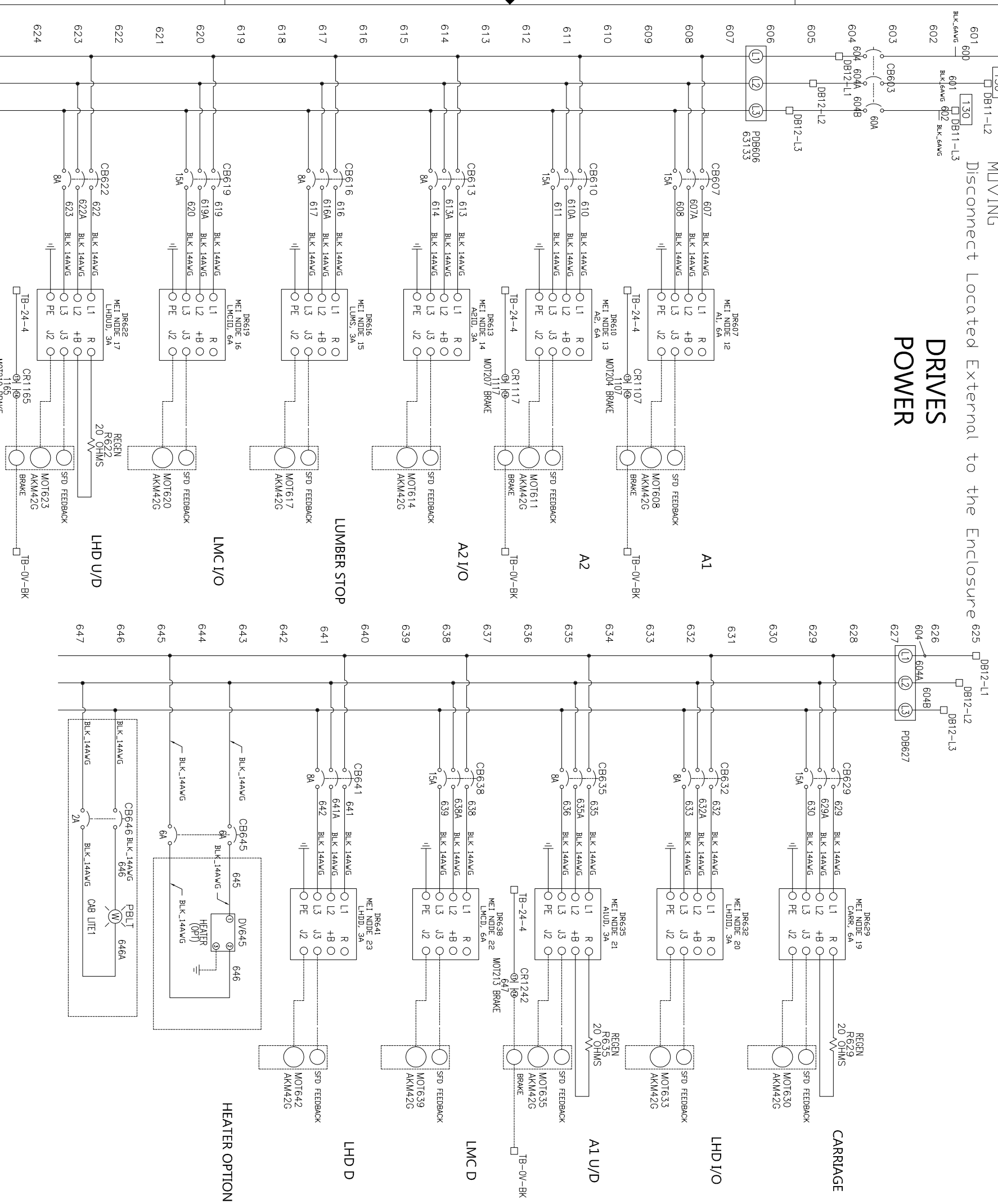


230VAC, 3phase, 60A

XFORM  
MOVING

Disconnect Located External to the Enclosure

# DRIVES POWER

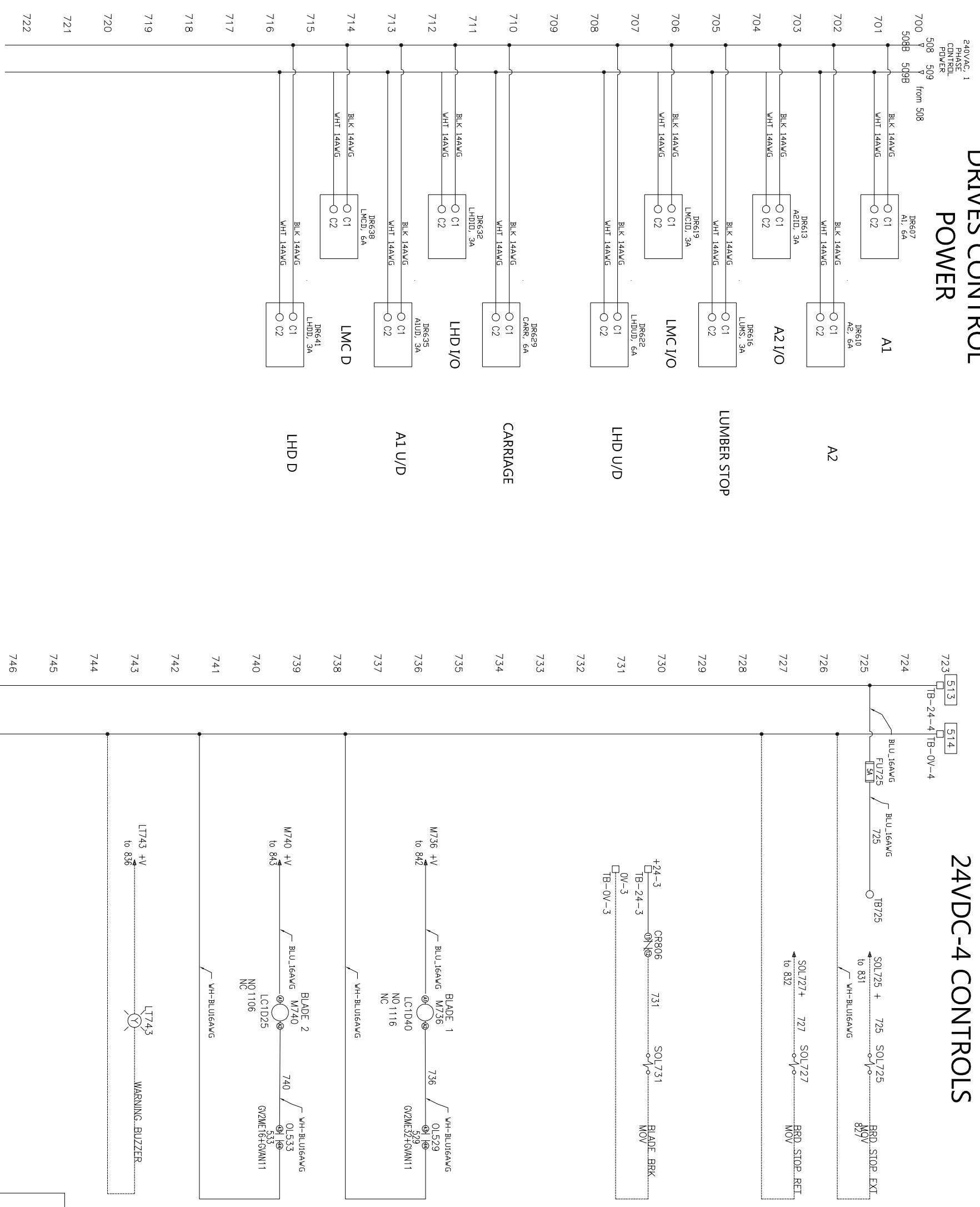


Alpine Engineering  
HP/S200 Moving

SIZE	FSOM NO	DRAWING NUMBER	REV
SCALE			K
SHEET			7 of 13

# DRIVES CONTROL POWER

# 24VDC-4 CONTROLS



Alpine Engineering  
 HP/S200 Moving

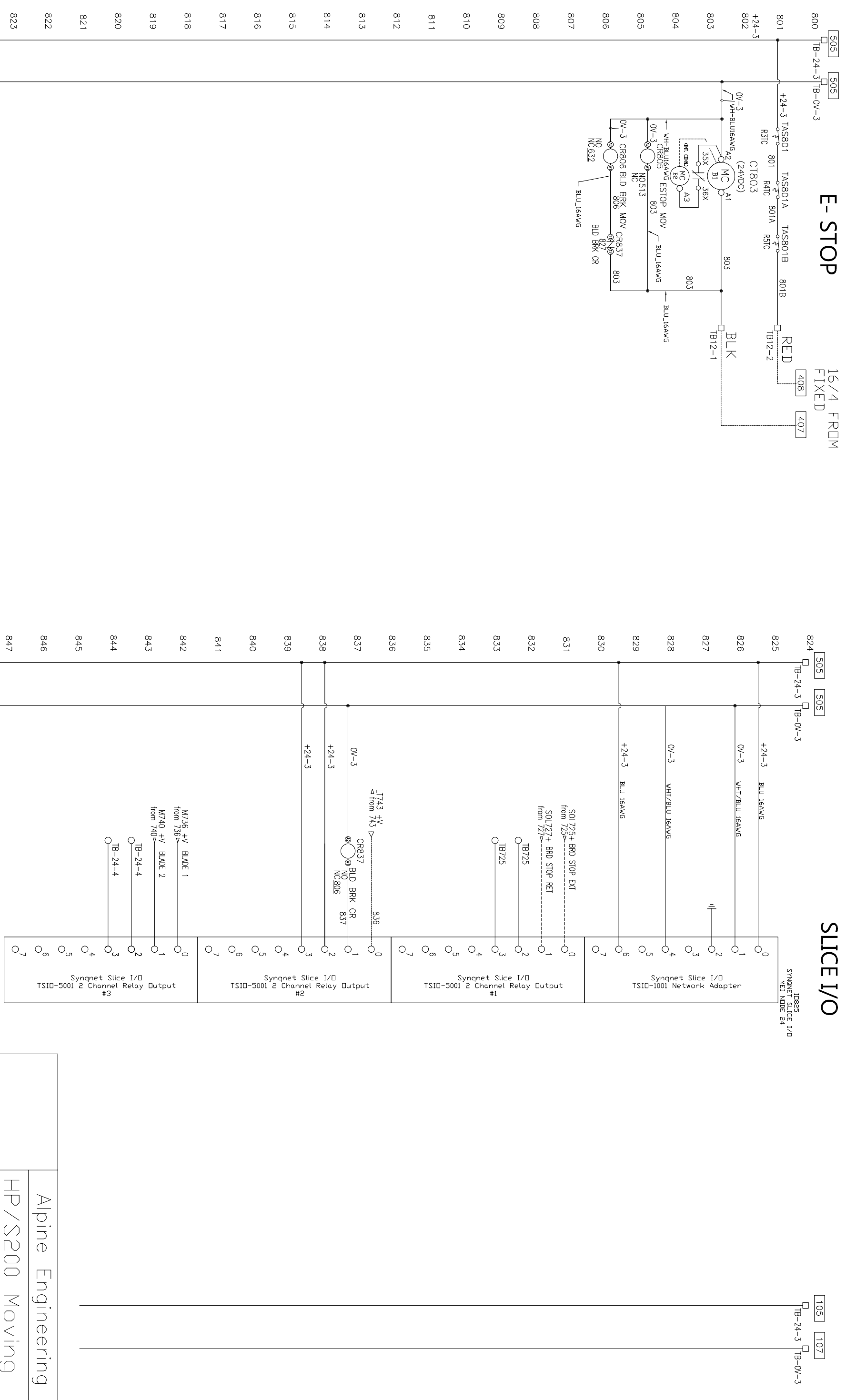
SIZE	FSCM NO	DRAWING NUMBER	REV
SCALE			K
SHEET			8 of 13

# E-STOP

16/4 FROM  
FIXED

# SLICE I/O

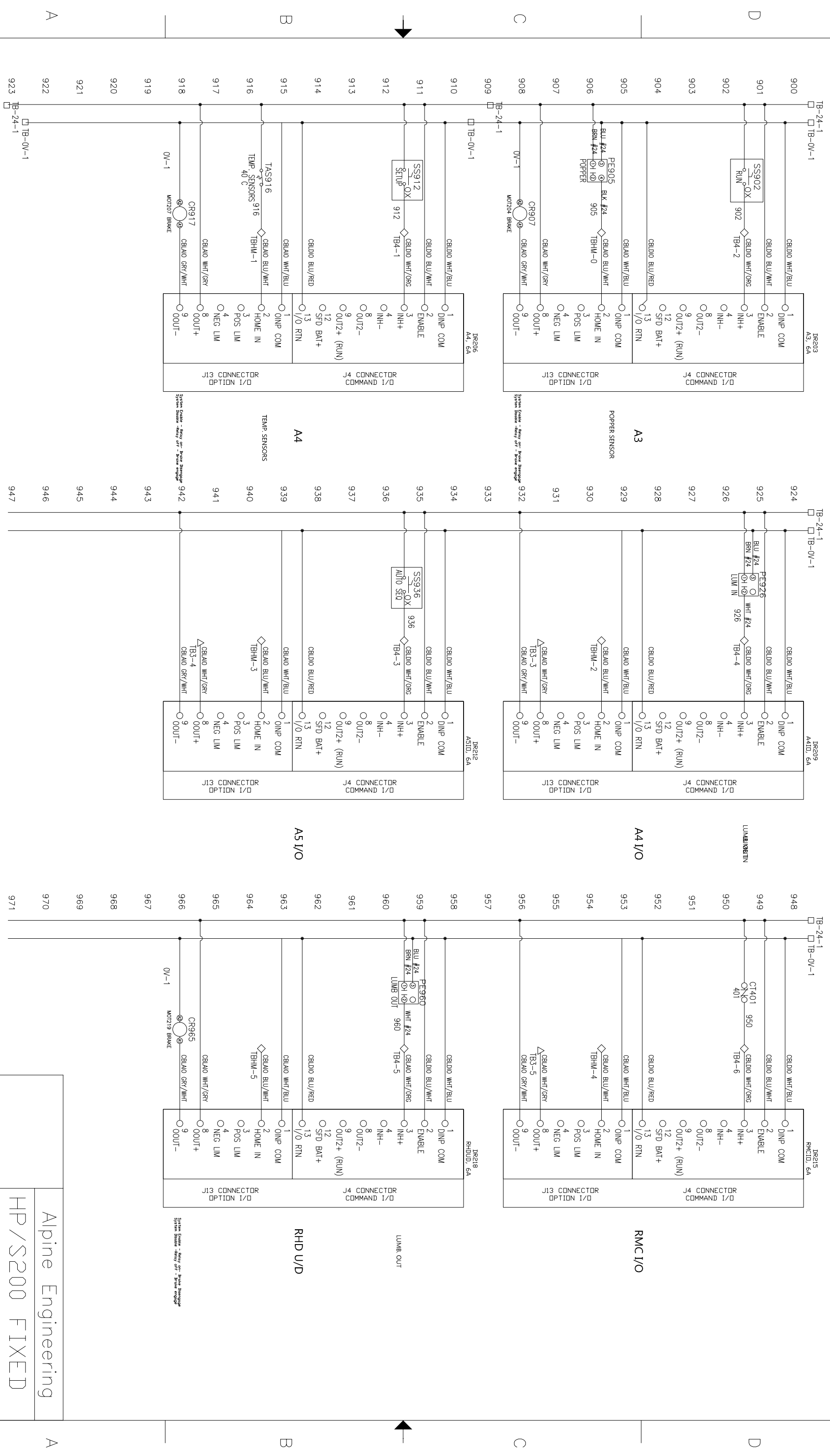
10825  
SYNQUET SLICE I/O  
NET NODE 24



Alpine Engineering  
 HP/S2000 Moving

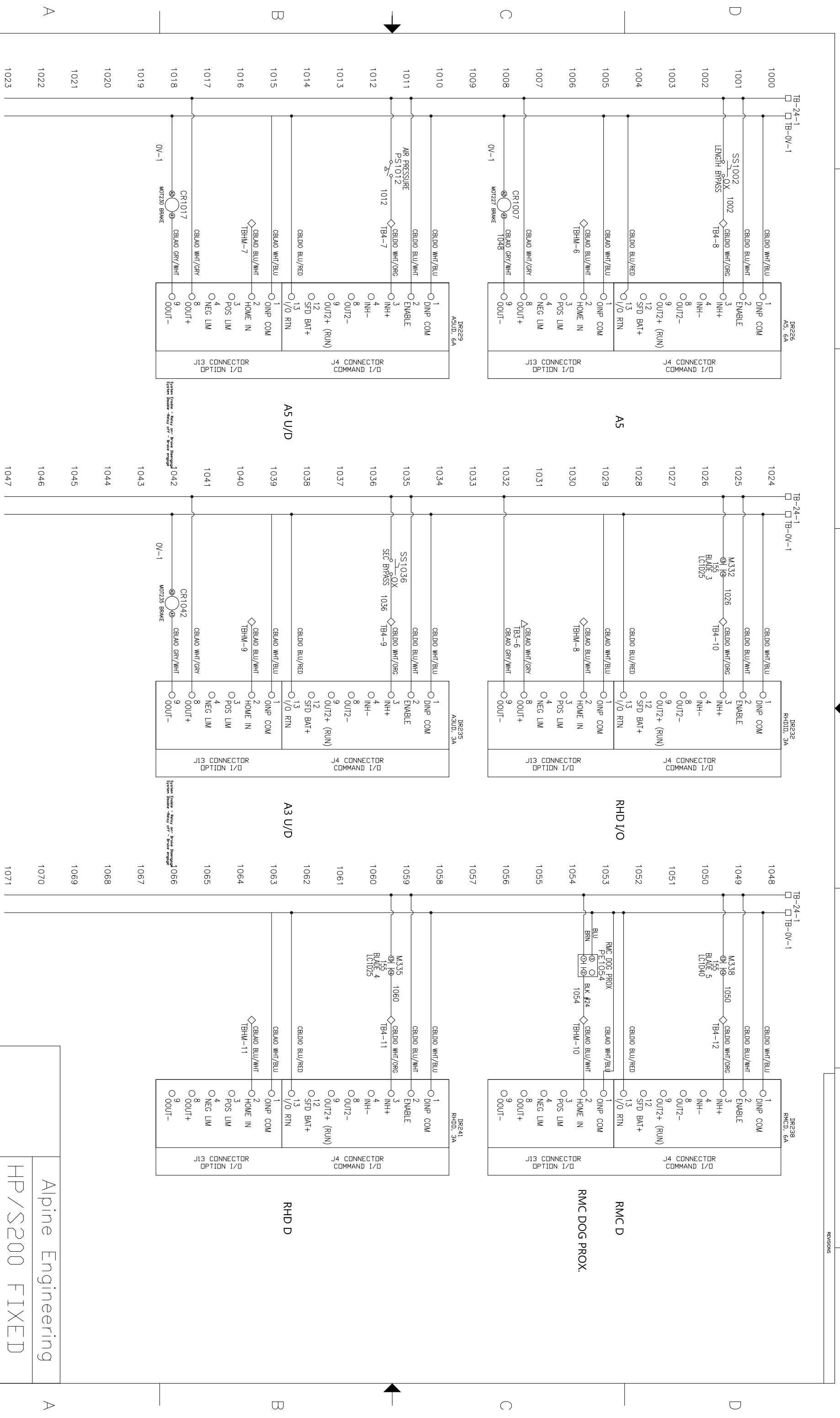
SIZE	FSOJ NO	DRAWING NUMBER	REV
SCALE		SHEET	K
		9 of 13	





Alpine Engineering  
 HP/S200 FIXED

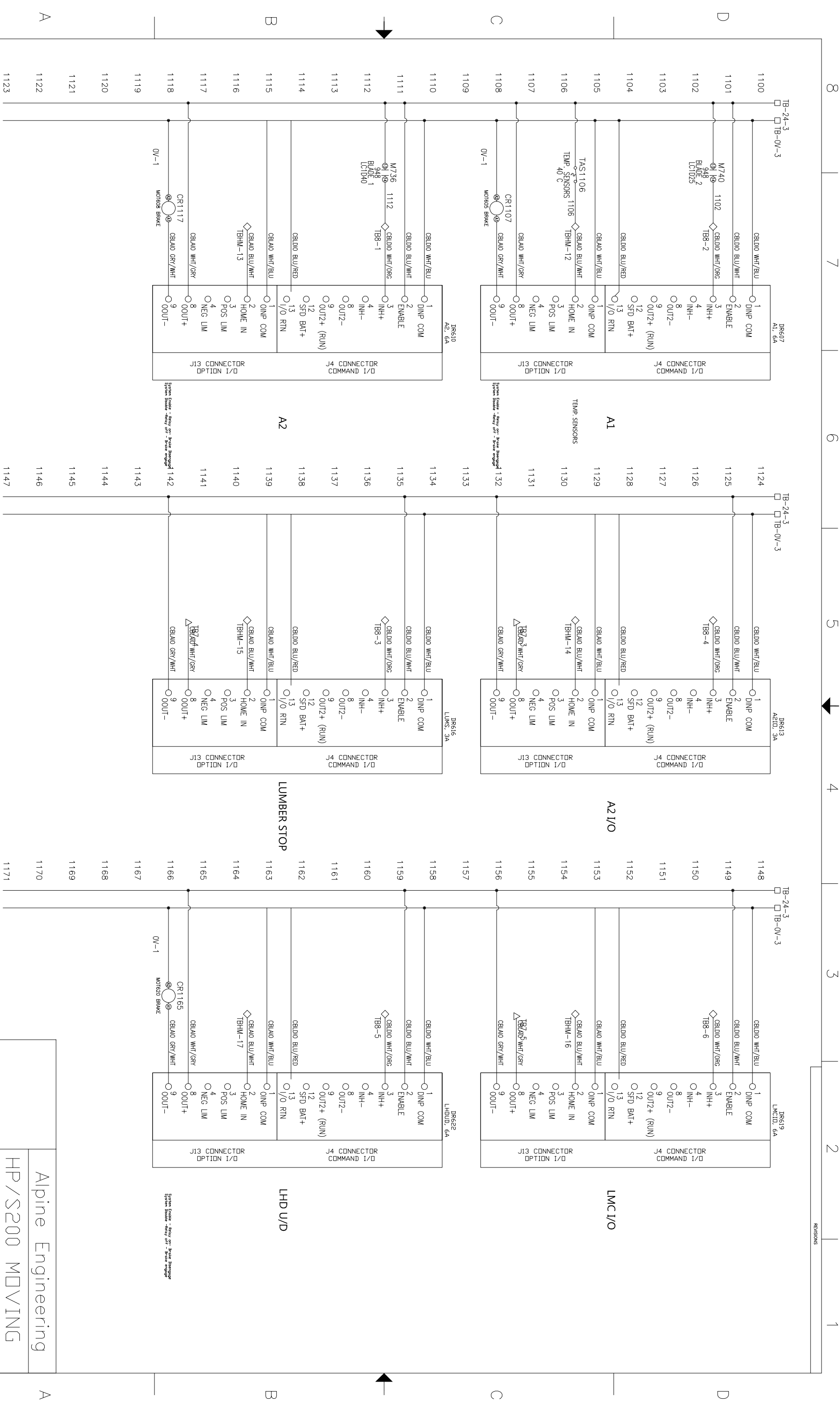
SIZE	FSCM NO	DRAWING NUMBER	REV
SCALE			K
SHEET			10 of 13



Alpine Engineering

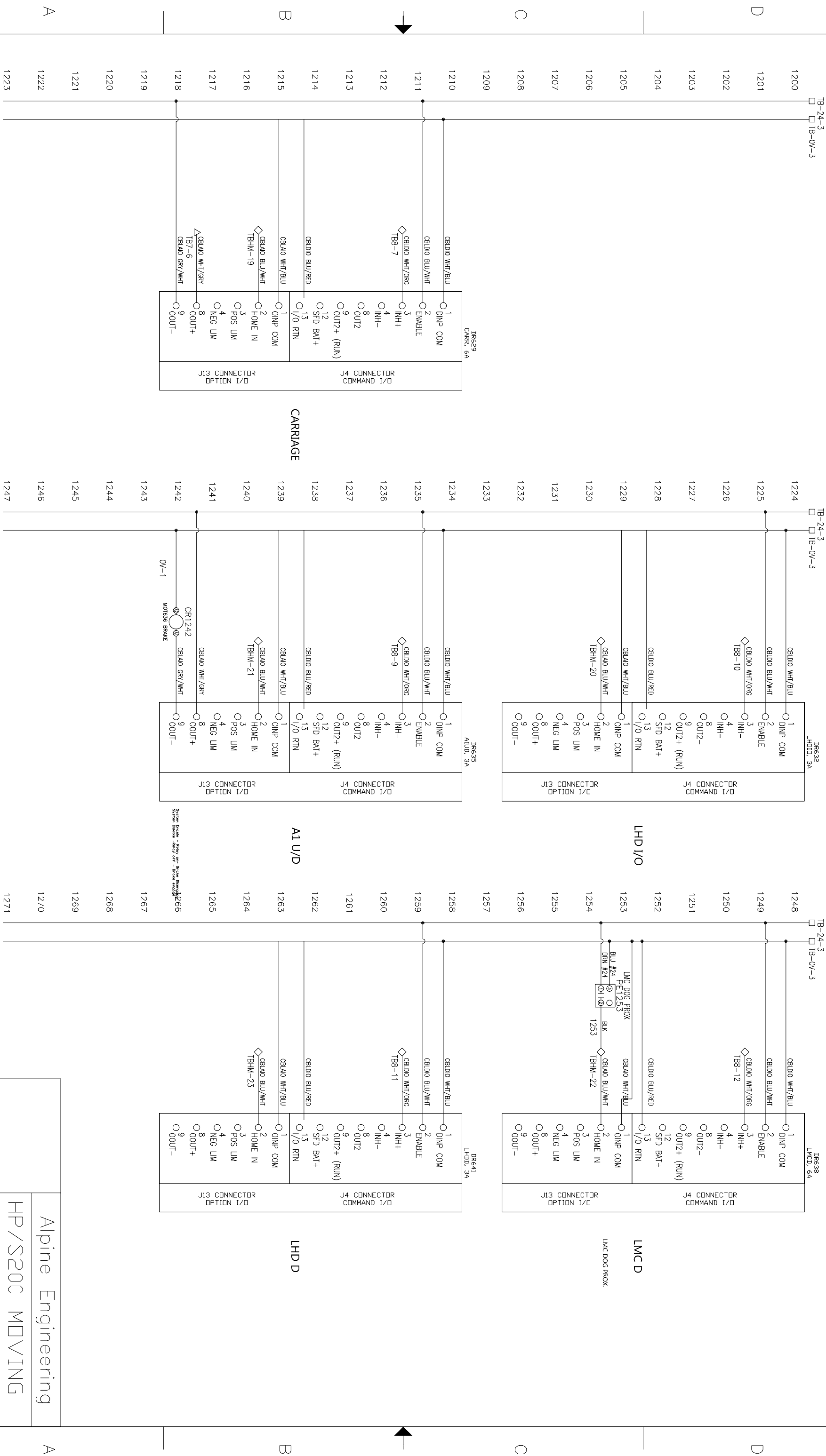
HP/S200 FIXED

SIZE	FSOM NO	DRAWING NUMBER	REV
SCALE			K
SHEET			11 of 13



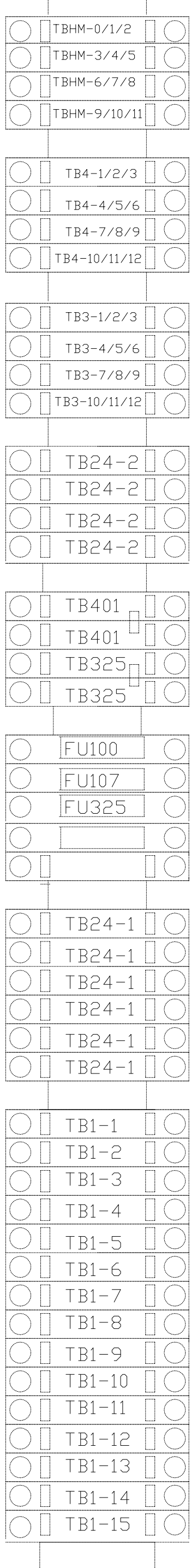
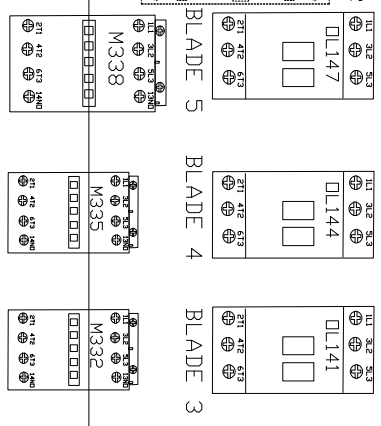
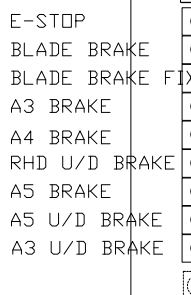
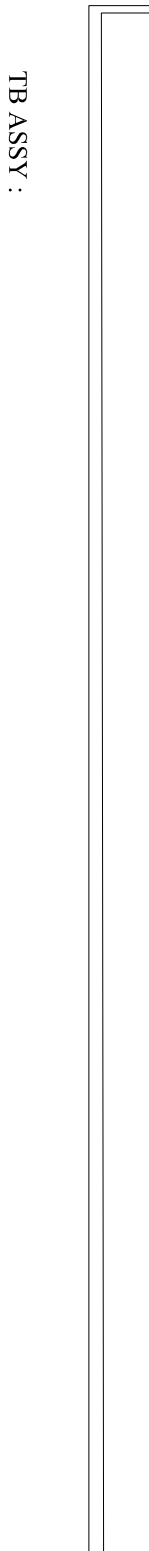
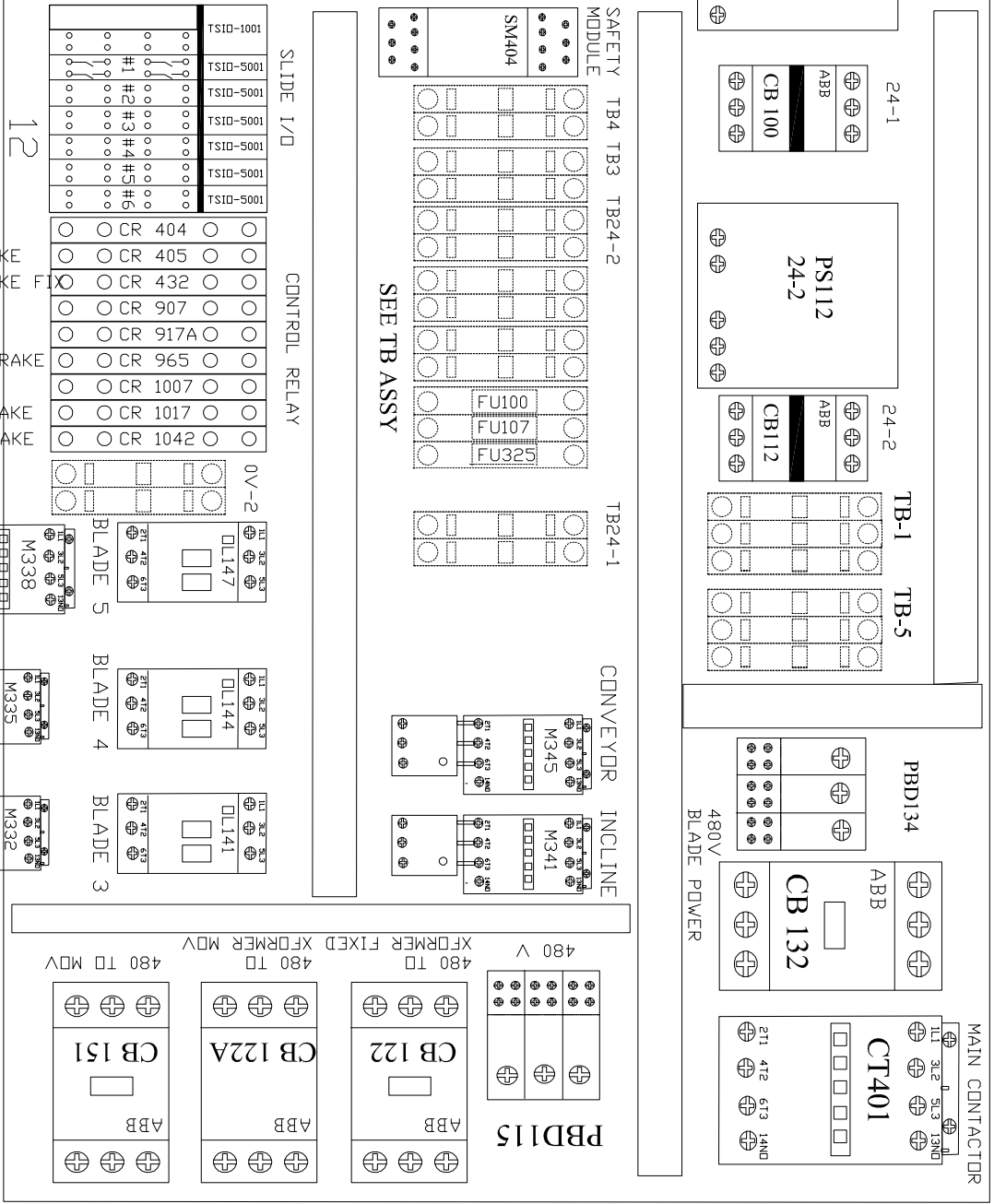
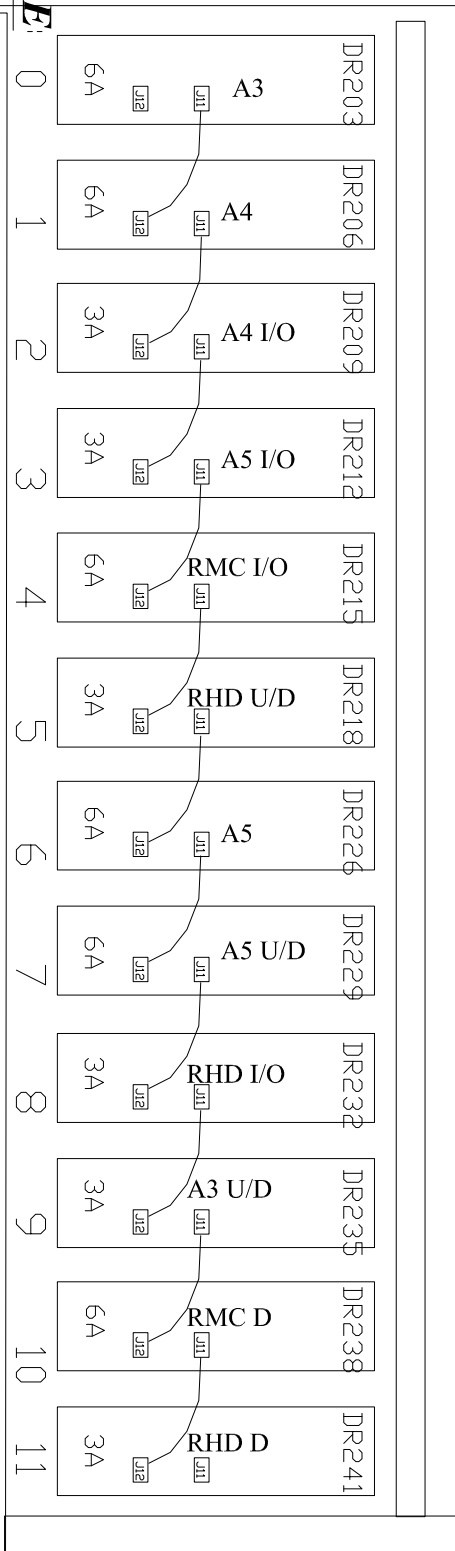
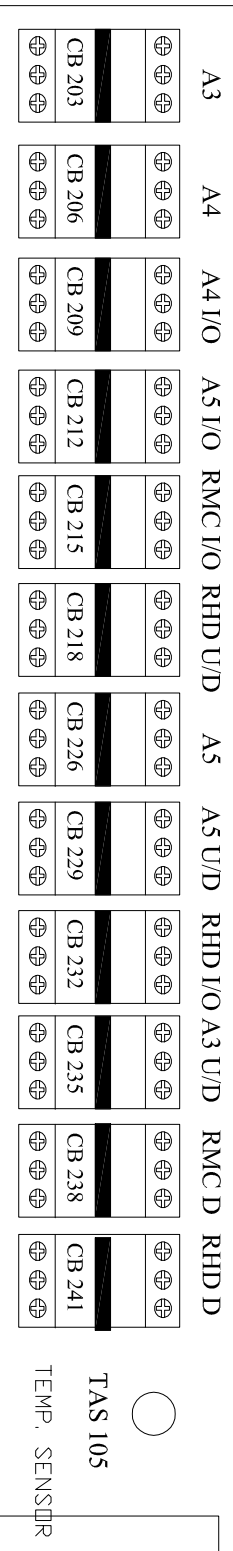
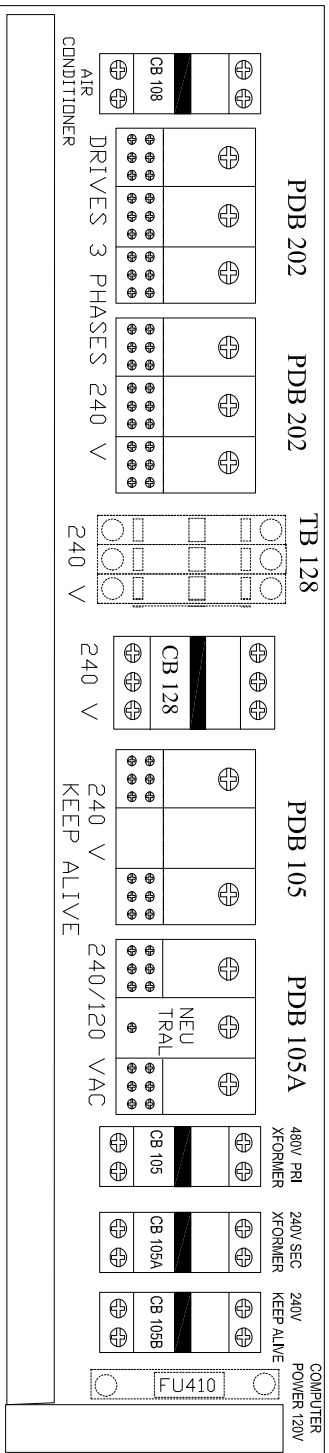
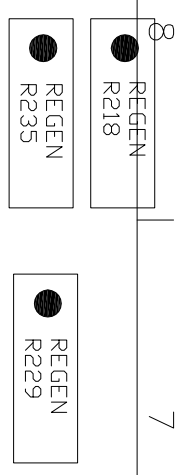
Alpine Engineering  
 HP/S200 MOVING

SIZE	FSCM NO.	DRAWING NUMBER	REV
SCALE			K
		SHEET	12 of 13



Alpine Engineering  
 HP/S200 MOVING

SIZE	FSQM NO	DRAWING NUMBER	REV
SCALE			K
SHEET			13 of 13



HP-S200 SCHEMATIC

HP FIX

SIZE	FSCM NO	DRAWING NUMBER	SHEET	13
SCALE				
REV				

